



THE NCSTM
The National Citizen SurveyTM

Bowling Green, KY

Technical Appendices

2018



2955 Valmont Road Suite 300
Boulder, Colorado 80301
n-r-c.com • 303-444-7863



Leaders at the Core of Better Communities

777 North Capitol Street NE Suite 500
Washington, DC 20002
icma.org • 800-745-8780

Contents

Appendix A: Complete Survey Responses	1
Appendix B: Benchmark Comparisons	19
Appendix C: Detailed Survey Methods	33
Appendix D: Survey Materials	38



The National Citizen Survey™
© 2001-2018 National Research Center, Inc.

The NCS™ is presented by NRC in collaboration with ICMA.

NRC is a charter member of the AAPOR Transparency Initiative, providing clear disclosure of our sound and ethical survey research practices.

Appendix A: Complete Survey Responses

Responses excluding “don’t know”

The following pages contain a complete set of responses to each question on the survey, excluding the “don’t know” responses. The percent of respondents giving a particular response is shown followed by the number of respondents (denoted with “N=”).

Table 1: Question 1

Please rate each of the following aspects of quality of life in Bowling Green:	Excellent		Good		Fair		Poor		Total	
Bowling Green as a place to live	45%	N=126	46%	N=129	8%	N=24	1%	N=3	100%	N=281
Your neighborhood as a place to live	37%	N=106	44%	N=123	17%	N=47	2%	N=6	100%	N=282
Bowling Green as a place to raise children	38%	N=95	49%	N=122	10%	N=26	2%	N=5	100%	N=248
Bowling Green as a place to work	37%	N=100	41%	N=109	15%	N=41	7%	N=19	100%	N=268
Bowling Green as a place to visit	31%	N=85	42%	N=116	19%	N=52	8%	N=23	100%	N=277
Bowling Green as a place to retire	36%	N=85	47%	N=112	11%	N=26	5%	N=13	100%	N=237
The overall quality of life in Bowling Green	33%	N=93	50%	N=141	15%	N=42	1%	N=4	100%	N=281

Table 2: Question 2

Please rate each of the following characteristics as they relate to Bowling Green as a whole:	Excellent		Good		Fair		Poor		Total	
Overall feeling of safety in Bowling Green	25%	N=69	59%	N=163	15%	N=41	2%	N=5	100%	N=277
Overall ease of getting to the places you usually have to visit	24%	N=65	39%	N=106	26%	N=70	12%	N=34	100%	N=275
Quality of overall natural environment in Bowling Green	30%	N=84	42%	N=116	19%	N=52	9%	N=24	100%	N=276
Overall “built environment” of Bowling Green (including overall design, buildings, parks and transportation systems)	22%	N=60	40%	N=112	28%	N=79	10%	N=27	100%	N=277
Health and wellness opportunities in Bowling Green	24%	N=68	49%	N=136	22%	N=61	4%	N=11	100%	N=276
Overall opportunities for education and enrichment	33%	N=86	49%	N=129	15%	N=38	3%	N=8	100%	N=261
Overall economic health of Bowling Green	22%	N=58	59%	N=160	16%	N=42	3%	N=8	100%	N=268
Sense of community	19%	N=51	44%	N=116	27%	N=71	10%	N=26	100%	N=264
Overall image or reputation of Bowling Green	27%	N=72	55%	N=147	13%	N=36	5%	N=13	100%	N=269

Table 3: Question 3

Please indicate how likely or unlikely you are to do each of the following:	Very likely		Somewhat likely		Somewhat unlikely		Very unlikely		Total	
Recommend living in Bowling Green to someone who asks	52%	N=144	38%	N=107	7%	N=20	3%	N=8	100%	N=279
Remain in Bowling Green for the next five years	59%	N=158	23%	N=63	10%	N=27	8%	N=21	100%	N=270

Table 4: Question 4

Please rate how safe or unsafe you feel:	Very safe		Somewhat safe		Neither safe nor unsafe		Somewhat unsafe		Very unsafe		Total	
In your neighborhood during the day	65%	N=182	27%	N=75	5%	N=13	4%	N=10	0%	N=0	100%	N=280
In Bowling Green's downtown/commercial area during the day	50%	N=132	42%	N=111	7%	N=18	2%	N=5	0%	N=0	100%	N=266

The National Citizen Survey™

Table 5: Question 5

Please rate each of the following characteristics as they relate to Bowling Green as a whole:	Excellent		Good		Fair		Poor		Total	
Traffic flow on major streets	5%	N=13	24%	N=66	42%	N=117	29%	N=80	100%	N=276
Ease of public parking	10%	N=28	38%	N=104	39%	N=105	12%	N=33	100%	N=271
Ease of travel by car in Bowling Green	12%	N=34	47%	N=131	33%	N=91	7%	N=19	100%	N=276
Ease of travel by public transportation in Bowling Green	6%	N=8	24%	N=33	31%	N=43	40%	N=55	100%	N=139
Ease of travel by bicycle in Bowling Green	9%	N=13	30%	N=43	30%	N=43	32%	N=46	100%	N=145
Ease of walking in Bowling Green	14%	N=33	36%	N=89	32%	N=80	18%	N=44	100%	N=245
Availability of paths and walking trails	15%	N=37	44%	N=108	29%	N=71	11%	N=27	100%	N=243
Air quality	22%	N=59	58%	N=153	17%	N=45	2%	N=6	100%	N=263
Cleanliness of Bowling Green	23%	N=62	54%	N=147	22%	N=59	1%	N=4	100%	N=272
Overall appearance of Bowling Green	23%	N=63	60%	N=164	15%	N=41	2%	N=6	100%	N=274
Public places where people want to spend time	22%	N=58	54%	N=146	19%	N=52	4%	N=12	100%	N=267
Variety of housing options	17%	N=43	44%	N=112	30%	N=75	9%	N=23	100%	N=253
Availability of affordable quality housing	12%	N=30	33%	N=84	36%	N=93	19%	N=49	100%	N=255
Fitness opportunities (including exercise classes and paths or trails, etc.)	33%	N=86	48%	N=126	16%	N=41	4%	N=9	100%	N=262
Recreational opportunities	23%	N=60	49%	N=129	21%	N=55	7%	N=17	100%	N=261
Availability of affordable quality food	31%	N=86	50%	N=138	17%	N=46	1%	N=4	100%	N=274
Availability of affordable quality health care	22%	N=53	49%	N=119	24%	N=59	5%	N=12	100%	N=243
Availability of preventive health services	24%	N=55	50%	N=115	23%	N=53	3%	N=7	100%	N=230
Availability of affordable quality mental health care	27%	N=41	35%	N=53	29%	N=44	10%	N=15	100%	N=154

Table 6: Question 6

Please rate each of the following characteristics as they relate to Bowling Green as a whole:	Excellent		Good		Fair		Poor		Total	
Availability of affordable quality child care/preschool	17%	N=23	40%	N=52	37%	N=48	6%	N=8	100%	N=131
K-12 education	32%	N=56	55%	N=98	11%	N=19	2%	N=4	100%	N=177
Adult educational opportunities	28%	N=55	53%	N=105	15%	N=30	4%	N=8	100%	N=198
Opportunities to attend cultural/arts/music activities	29%	N=70	45%	N=110	23%	N=56	4%	N=9	100%	N=245
Opportunities to participate in religious or spiritual events and activities	41%	N=92	47%	N=105	11%	N=24	1%	N=2	100%	N=223
Employment opportunities	25%	N=61	46%	N=114	21%	N=52	8%	N=21	100%	N=247
Shopping opportunities	25%	N=66	49%	N=131	21%	N=56	5%	N=14	100%	N=268
Cost of living in Bowling Green	9%	N=24	51%	N=132	34%	N=88	7%	N=17	100%	N=261
Overall quality of business and service establishments in Bowling Green	24%	N=63	56%	N=146	19%	N=50	1%	N=2	100%	N=261
Vibrant downtown/commercial area	19%	N=49	42%	N=106	34%	N=86	5%	N=14	100%	N=254
Overall quality of new development in Bowling Green	24%	N=61	51%	N=128	21%	N=53	3%	N=8	100%	N=250
Opportunities to participate in social events and activities	17%	N=41	51%	N=123	24%	N=59	7%	N=18	100%	N=241
Opportunities to volunteer	27%	N=60	53%	N=116	14%	N=31	5%	N=11	100%	N=217
Opportunities to participate in community matters	24%	N=52	46%	N=97	23%	N=48	7%	N=15	100%	N=212
Openness and acceptance of the community toward people of diverse backgrounds	23%	N=54	38%	N=89	19%	N=45	19%	N=44	100%	N=233
Neighborliness of residents in Bowling Green	19%	N=45	41%	N=101	34%	N=84	6%	N=14	100%	N=245

The National Citizen Survey™

Table 7: Question 7

Please indicate whether or not you have done each of the following in the last 12 months.	No		Yes		Total	
Made efforts to conserve water	30%	N=81	70%	N=187	100%	N=268
Made efforts to make your home more energy efficient	24%	N=63	76%	N=204	100%	N=267
Observed a code violation or other hazard in Bowling Green (weeds, abandoned buildings, etc.)	53%	N=142	47%	N=124	100%	N=266
Household member was a victim of a crime in Bowling Green	88%	N=234	12%	N=32	100%	N=266
Reported a crime to the police in Bowling Green	76%	N=203	24%	N=64	100%	N=267
Stocked supplies in preparation for an emergency	69%	N=181	31%	N=83	100%	N=265
Campaigned or advocated for an issue, cause or candidate	67%	N=177	33%	N=88	100%	N=265
Contacted the City of Bowling Green (in-person, phone, email or web) for help or information	67%	N=180	33%	N=87	100%	N=267
Contacted Bowling Green elected officials (in-person, phone, email or web) to express your opinion	76%	N=203	24%	N=64	100%	N=266

Table 8: Question 8

In the last 12 months, about how many times, if at all, have you or other household members done each of the following in Bowling Green?	2 times a week or more		2-4 times a month		Once a month or less		Not at all		Total	
Used Bowling Green recreation centers or their services	10%	N=25	15%	N=39	29%	N=77	46%	N=121	100%	N=262
Visited a neighborhood park or City park	15%	N=40	32%	N=86	37%	N=99	15%	N=39	100%	N=264
Used Bowling Green public libraries or their services	11%	N=29	14%	N=38	30%	N=79	45%	N=119	100%	N=265
Participated in religious or spiritual activities in Bowling Green	24%	N=63	23%	N=60	14%	N=37	40%	N=107	100%	N=267
Attended a City-sponsored event	2%	N=6	7%	N=18	44%	N=116	48%	N=127	100%	N=266
Used bus, rail, subway or other public transportation instead of driving	0%	N=1	2%	N=5	3%	N=9	94%	N=250	100%	N=266
Carpooled with other adults or children instead of driving alone	10%	N=26	16%	N=42	17%	N=46	57%	N=152	100%	N=267
Walked or biked instead of driving	11%	N=30	14%	N=37	16%	N=43	59%	N=157	100%	N=266
Volunteered your time to some group/activity in Bowling Green	8%	N=22	12%	N=32	32%	N=84	48%	N=127	100%	N=265
Participated in a club	5%	N=13	10%	N=27	20%	N=52	64%	N=168	100%	N=261
Talked to or visited with your immediate neighbors	25%	N=66	24%	N=64	37%	N=100	14%	N=39	100%	N=268
Done a favor for a neighbor	13%	N=34	24%	N=64	35%	N=94	28%	N=75	100%	N=267

Table 9: Question 9

Thinking about local public meetings (of local elected officials like the City of Bowling Green Board of Commissioners or Warren County Fiscal Court, advisory boards, town halls, HOA, neighborhood watch, etc.), in the last 12 months, about how many times, if at all, have you or other household members attended or watched a local public meeting?	2 times a week or more		2-4 times a month		Once a month or less		Not at all		Total	
Attended a local public meeting	1%	N=3	1%	N=3	21%	N=56	77%	N=203	100%	N=265
Watched (online or on television) a local public meeting	1%	N=1	10%	N=28	20%	N=53	69%	N=184	100%	N=266

Table 10: Question 10

Please rate the quality of each of the following services in Bowling Green:	Excellent		Good		Fair		Poor		Total	
Bowling Green Police Department services	30%	N=66	50%	N=111	16%	N=35	5%	N=11	100%	N=223
Bowling Green Fire Department services	45%	N=94	51%	N=105	4%	N=8	0%	N=0	100%	N=207
Ambulance or emergency medical services	43%	N=84	49%	N=94	8%	N=15	1%	N=1	100%	N=193
Crime prevention	24%	N=41	51%	N=86	18%	N=31	7%	N=13	100%	N=170
Fire prevention and education	29%	N=52	54%	N=97	15%	N=28	1%	N=2	100%	N=179
Traffic enforcement	20%	N=45	41%	N=92	23%	N=52	15%	N=33	100%	N=222

The National Citizen Survey™

Please rate the quality of each of the following services in Bowling Green:	Excellent		Good		Fair		Poor		Total	
Street repair	8%	N=19	41%	N=100	37%	N=90	15%	N=37	100%	N=247
Street cleaning	17%	N=39	45%	N=105	34%	N=77	4%	N=9	100%	N=231
Street lighting	17%	N=42	56%	N=140	22%	N=54	6%	N=15	100%	N=252
Snow removal	21%	N=54	48%	N=120	23%	N=56	8%	N=19	100%	N=249
Sidewalk maintenance	14%	N=32	43%	N=100	37%	N=86	6%	N=14	100%	N=232
Traffic signal timing	6%	N=16	42%	N=110	31%	N=81	20%	N=52	100%	N=260
Bus or transit services	11%	N=11	33%	N=32	25%	N=24	30%	N=29	100%	N=95
Garbage collection	39%	N=98	51%	N=128	7%	N=18	3%	N=8	100%	N=253
Recycling	28%	N=65	51%	N=118	15%	N=35	5%	N=12	100%	N=229
Yard waste pick-up	28%	N=50	41%	N=71	23%	N=40	8%	N=14	100%	N=175
Storm drainage	17%	N=36	48%	N=100	30%	N=63	6%	N=12	100%	N=210
Drinking water	29%	N=74	49%	N=123	18%	N=44	4%	N=11	100%	N=252
Power (electric and/or gas) utility	37%	N=94	44%	N=112	15%	N=38	5%	N=12	100%	N=256
Utility billing	22%	N=53	44%	N=108	27%	N=66	8%	N=20	100%	N=247
City parks	33%	N=77	54%	N=126	10%	N=23	3%	N=7	100%	N=232
Recreation programs or classes	28%	N=42	50%	N=74	20%	N=29	2%	N=3	100%	N=147
Recreation centers or facilities	25%	N=43	59%	N=101	15%	N=25	1%	N=2	100%	N=171
Land use, planning and zoning	9%	N=15	46%	N=82	28%	N=50	18%	N=32	100%	N=179
Code enforcement (weeds, abandoned buildings, etc.)	10%	N=15	36%	N=55	41%	N=62	13%	N=20	100%	N=154
Animal control	18%	N=31	46%	N=79	27%	N=46	8%	N=14	100%	N=171
Economic development	22%	N=42	53%	N=102	21%	N=41	5%	N=9	100%	N=193
Health services	24%	N=48	57%	N=117	18%	N=36	1%	N=2	100%	N=204
Public library services	40%	N=70	53%	N=94	6%	N=11	1%	N=2	100%	N=177
Public information services	18%	N=29	61%	N=98	18%	N=29	3%	N=5	100%	N=161
Emergency preparedness (services that prepare the community for natural disasters or other emergency situations)	14%	N=25	65%	N=123	16%	N=30	5%	N=9	100%	N=188
Preservation of natural areas such as open space, farmlands and greenbelts	14%	N=26	42%	N=79	28%	N=52	17%	N=32	100%	N=189
Bowling Green open space	12%	N=25	47%	N=98	30%	N=62	11%	N=23	100%	N=208
City-sponsored special events	11%	N=18	57%	N=92	30%	N=48	3%	N=5	100%	N=163
Overall customer service by Bowling Green employees (police, receptionists, planners, etc.)	26%	N=61	44%	N=102	24%	N=55	5%	N=13	100%	N=230
Bowling Green TV Channel 4	19%	N=25	50%	N=65	24%	N=31	7%	N=9	100%	N=130
City of Bowling Green website	13%	N=20	56%	N=83	25%	N=37	5%	N=8	100%	N=147

Table 11: Question 11

Overall, how would you rate the quality of the services provided by each of the following?	Excellent		Good		Fair		Poor		Total	
The City of Bowling Green	16%	N=38	60%	N=143	20%	N=48	3%	N=7	100%	N=236
The Federal Government	5%	N=11	35%	N=72	40%	N=83	20%	N=41	100%	N=207

The National Citizen Survey™

Table 12: Question 12

Please rate the following categories of Bowling Green government performance:	Excellent		Good		Fair		Poor		Total	
	%	N	%	N	%	N	%	N	%	N
The value of services for the taxes paid to Bowling Green	10%	N=24	40%	N=95	36%	N=86	13%	N=32	100%	N=237
The overall direction that Bowling Green is taking	16%	N=37	45%	N=105	30%	N=72	10%	N=22	100%	N=237
The job Bowling Green government does at welcoming citizen involvement	13%	N=26	43%	N=86	27%	N=54	16%	N=32	100%	N=199
Overall confidence in Bowling Green government	11%	N=25	40%	N=93	34%	N=77	15%	N=34	100%	N=229
Generally acting in the best interest of the community	10%	N=22	52%	N=117	27%	N=61	11%	N=24	100%	N=225
Being honest	10%	N=19	45%	N=91	28%	N=56	17%	N=34	100%	N=201
Treating all residents fairly	8%	N=17	46%	N=101	27%	N=58	19%	N=42	100%	N=217

Table 13: Question 13

Please rate how important, if at all, you think it is for the Bowling Green community to focus on each of the following in the coming two years:	Essential		Very important		Somewhat important		Not at all important		Total	
	%	N	%	N	%	N	%	N	%	N
Overall feeling of safety in Bowling Green	65%	N=170	28%	N=72	6%	N=16	1%	N=2	100%	N=260
Overall ease of getting to the places you usually have to visit	38%	N=99	44%	N=116	15%	N=39	3%	N=7	100%	N=260
Quality of overall natural environment in Bowling Green	45%	N=115	41%	N=106	13%	N=33	1%	N=2	100%	N=256
Overall "built environment" of Bowling Green (including overall design, buildings, parks and transportation systems)	29%	N=75	48%	N=124	21%	N=54	2%	N=6	100%	N=258
Health and wellness opportunities in Bowling Green	46%	N=118	37%	N=97	16%	N=40	1%	N=4	100%	N=259
Overall opportunities for education and enrichment	51%	N=130	33%	N=86	16%	N=40	1%	N=1	100%	N=257
Overall economic health of Bowling Green	46%	N=118	46%	N=118	9%	N=23	0%	N=0	100%	N=259
Sense of community	30%	N=78	44%	N=114	24%	N=62	2%	N=5	100%	N=259

Table 14: Question 14

Please rate the following aspects of Bowling Green's parks and recreation facilities:	Excellent		Good		Fair		Poor		Total	
	%	N	%	N	%	N	%	N	%	N
Appearance of Bowling Green's parks and recreation facilities	33%	N=78	56%	N=134	9%	N=21	2%	N=6	100%	N=239
Range of activities available at Bowling Green's parks and recreation facilities	25%	N=56	51%	N=112	19%	N=42	4%	N=10	100%	N=220

Table 15: Question 15

Please rate the condition of residential and secondary roads within the city limits of Bowling Green (exclude state roads and federal highways that have route numbers, for example, U.S. 231 Scottsville Road, U.S. 31W Nashville Road, etc., which are not maintained by the City of Bowling Green).	Percent	Number
	Excellent condition	13%
Good condition	49%	N=124
Fair condition	30%	N=76
Poor condition	9%	N=22
Total	100%	N=255

The National Citizen Survey™

Table 16: Question 16

Please indicate how much of a source, if at all, you consider each of the following to be for obtaining information from the City of Bowling Green:	Major source		Minor source		Not a source		Total	
	Percent	N	Percent	N	Percent	N	Percent	N
City website (www.bgky.org)	50%	N=126	29%	N=72	21%	N=54	100%	N=252
Bowling Green Blog	9%	N=23	31%	N=78	59%	N=148	100%	N=249
City's Facebook page	28%	N=71	33%	N=83	39%	N=98	100%	N=252
City's Twitter feed	18%	N=43	26%	N=64	56%	N=137	100%	N=244
City Enews	15%	N=36	28%	N=69	57%	N=140	100%	N=245
Local cable channel 4	31%	N=76	35%	N=88	34%	N=84	100%	N=247

Table 17: Question D1

How often, if at all, do you do each of the following, considering all of the times you could?	Never		Rarely		Sometimes		Usually		Always		Total	
	Percent	N	Percent	N	Percent	N	Percent	N	Percent	N	Percent	N
Recycle at home	19%	N=48	8%	N=21	12%	N=32	16%	N=41	44%	N=112	100%	N=254
Purchase goods or services from a business located in Bowling Green	1%	N=3	2%	N=6	11%	N=28	45%	N=114	41%	N=104	100%	N=255
Eat at least 5 portions of fruits and vegetables a day	2%	N=6	12%	N=32	43%	N=109	32%	N=81	11%	N=27	100%	N=254
Participate in moderate or vigorous physical activity	3%	N=6	18%	N=46	32%	N=80	33%	N=83	15%	N=38	100%	N=254
Read or watch local news (via television, paper, computer, etc.)	2%	N=6	17%	N=44	19%	N=49	30%	N=77	31%	N=80	100%	N=256
Vote in local elections	18%	N=46	11%	N=28	7%	N=18	12%	N=30	52%	N=133	100%	N=255

Table 18: Question D2

Would you say that in general your health is:	Percent	Number
Excellent	14%	N=37
Very good	43%	N=109
Good	30%	N=77
Fair	12%	N=30
Poor	1%	N=2
Total	100%	N=256

Table 19: Question D3

What impact, if any, do you think the economy will have on your family income in the next 6 months? Do you think the impact will be:	Percent	Number
Very positive	13%	N=32
Somewhat positive	29%	N=74
Neutral	47%	N=117
Somewhat negative	9%	N=22
Very negative	2%	N=6
Total	100%	N=250

The National Citizen Survey™

Table 20: Question D4

What is your employment status?	Percent	Number
Working full time for pay	66%	N=169
Working part time for pay	10%	N=26
Unemployed, looking for paid work	2%	N=5
Unemployed, not looking for paid work	3%	N=7
Fully retired	19%	N=50
Total	100%	N=258

Table 21: Question D5

Do you work inside the boundaries of Bowling Green?	Percent	Number
Yes, outside the home	61%	N=152
Yes, from home	7%	N=18
No	32%	N=79
Total	100%	N=249

Table 22: Question D6

How many years have you lived in Bowling Green?	Percent	Number
Less than 2 years	13%	N=35
2 to 5 years	16%	N=43
6 to 10 years	12%	N=31
11 to 20 years	16%	N=41
More than 20 years	43%	N=111
Total	100%	N=260

Table 23: Question D7

Which best describes the building you live in?	Percent	Number
One family house detached from any other houses	53%	N=136
Building with two or more homes (duplex, townhome, apartment or condominium)	43%	N=110
Mobile home	2%	N=5
Other	2%	N=4
Total	100%	N=255

Table 24: Question D8

Is this house, apartment or mobile home...	Percent	Number
Rented	55%	N=139
Owned	45%	N=112
Total	100%	N=251

The National Citizen Survey™

Table 25: Question D9

About how much is your monthly housing cost for the place you live (including rent, mortgage payment, property tax, property insurance and homeowners' association (HOA) fees)?	Percent	Number
Less than \$300 per month	5%	N=12
\$300 to \$599 per month	29%	N=73
\$600 to \$999 per month	34%	N=86
\$1,000 to \$1,499 per month	20%	N=51
\$1,500 to \$2,499 per month	9%	N=23
\$2,500 or more per month	3%	N=8
Total	100%	N=253

Table 26: Question D10

Do any children 17 or under live in your household?	Percent	Number
No	73%	N=185
Yes	27%	N=69
Total	100%	N=255

Table 27: Question D11

Are you or any other members of your household aged 65 or older?	Percent	Number
No	80%	N=204
Yes	20%	N=52
Total	100%	N=256

Table 28: Question D12

How much do you anticipate your household's total income before taxes will be for the current year? (Please include in your total income money from all sources for all persons living in your household.)	Percent	Number
Less than \$25,000	19%	N=49
\$25,000 to \$49,999	25%	N=63
\$50,000 to \$99,999	31%	N=78
\$100,000 to \$149,999	14%	N=36
\$150,000 or more	11%	N=27
Total	100%	N=253

Table 29: Question D13

Are you Spanish, Hispanic or Latino?	Percent	Number
No, not Spanish, Hispanic or Latino	95%	N=237
Yes, I consider myself to be Spanish, Hispanic or Latino	5%	N=12
Total	100%	N=249

The National Citizen Survey™

Table 30: Question D14

What is your race? (Mark one or more races to indicate what race(s) you consider yourself to be.)	Percent	Number
American Indian or Alaskan Native	2%	N=6
Asian, Asian Indian or Pacific Islander	8%	N=20
Black or African American	9%	N=24
White	86%	N=217
Other	4%	N=11

Total may exceed 100% as respondents could select more than one option.

Table 31: Question D15

In which category is your age?	Percent	Number
18 to 24 years	12%	N=32
25 to 34 years	29%	N=74
35 to 44 years	14%	N=37
45 to 54 years	16%	N=40
55 to 64 years	12%	N=30
65 to 74 years	9%	N=24
75 years or older	8%	N=20
Total	100%	N=256

Table 32: Question D16

What is your sex?	Percent	Number
Female	54%	N=131
Male	46%	N=111
Total	100%	N=242

Table 33: Question D17

Do you consider a cell phone or landline your primary telephone number?	Percent	Number
Cell	80%	N=194
Land line	9%	N=21
Both	11%	N=27
Total	100%	N=241

Responses including “don’t know”

The following pages contain a complete set of responses to each question on the survey, including the “don’t know” responses. The percent of respondents giving a particular response is shown followed by the number of respondents (denoted with “N=”).

Table 34: Question 1

Please rate each of the following aspects of quality of life in Bowling Green:	Excellent		Good		Fair		Poor		Don't know		Total	
Bowling Green as a place to live	45%	N=126	46%	N=129	8%	N=24	1%	N=3	0%	N=0	100%	N=281
Your neighborhood as a place to live	37%	N=106	44%	N=123	17%	N=47	2%	N=6	0%	N=0	100%	N=282
Bowling Green as a place to raise children	34%	N=95	44%	N=122	9%	N=26	2%	N=5	12%	N=32	100%	N=280
Bowling Green as a place to work	36%	N=100	39%	N=109	15%	N=41	7%	N=19	4%	N=12	100%	N=280
Bowling Green as a place to visit	30%	N=85	41%	N=116	19%	N=52	8%	N=23	1%	N=4	100%	N=281
Bowling Green as a place to retire	31%	N=85	40%	N=112	9%	N=26	5%	N=13	15%	N=42	100%	N=279
The overall quality of life in Bowling Green	33%	N=93	50%	N=141	15%	N=42	1%	N=4	0%	N=0	100%	N=281

Table 35: Question 2

Please rate each of the following characteristics as they relate to Bowling Green as a whole:	Excellent		Good		Fair		Poor		Don't know		Total	
Overall feeling of safety in Bowling Green	25%	N=69	58%	N=163	15%	N=41	2%	N=5	1%	N=2	100%	N=279
Overall ease of getting to the places you usually have to visit	23%	N=65	38%	N=106	25%	N=70	12%	N=34	1%	N=2	100%	N=277
Quality of overall natural environment in Bowling Green	30%	N=84	42%	N=116	19%	N=52	9%	N=24	1%	N=3	100%	N=278
Overall “built environment” of Bowling Green (including overall design, buildings, parks and transportation systems)	21%	N=60	40%	N=112	28%	N=79	10%	N=27	1%	N=1	100%	N=278
Health and wellness opportunities in Bowling Green	24%	N=68	49%	N=136	22%	N=61	4%	N=11	1%	N=3	100%	N=278
Overall opportunities for education and enrichment	31%	N=86	46%	N=129	14%	N=38	3%	N=8	6%	N=17	100%	N=278
Overall economic health of Bowling Green	21%	N=58	57%	N=160	15%	N=42	3%	N=8	4%	N=11	100%	N=279
Sense of community	18%	N=51	42%	N=116	26%	N=71	10%	N=26	4%	N=12	100%	N=276
Overall image or reputation of Bowling Green	26%	N=72	53%	N=147	13%	N=36	5%	N=13	3%	N=9	100%	N=278

Table 36: Question 3

Please indicate how likely or unlikely you are to do each of the following:	Very likely		Somewhat likely		Somewhat unlikely		Very unlikely		Don't know		Total	
Recommend living in Bowling Green to someone who asks	51%	N=144	38%	N=107	7%	N=20	3%	N=8	0%	N=1	100%	N=280
Remain in Bowling Green for the next five years	57%	N=158	23%	N=63	10%	N=27	8%	N=21	3%	N=9	100%	N=279

Table 37: Question 4

Please rate how safe or unsafe you feel:	Very safe		Somewhat safe		Neither safe nor unsafe		Somewhat unsafe		Very unsafe		Don't know		Total	
In your neighborhood during the day	65%	N=182	27%	N=75	5%	N=13	4%	N=10	0%	N=0	0%	N=0	100%	N=280
In Bowling Green's downtown/commercial area during the day	47%	N=132	39%	N=111	6%	N=18	2%	N=5	0%	N=0	5%	N=14	100%	N=280

The National Citizen Survey™

Table 38: Question 5

Please rate each of the following characteristics as they relate to Bowling Green as a whole:	Excellent		Good		Fair		Poor		Don't know		Total	
	%	N	%	N	%	N	%	N	%	N	%	N
Traffic flow on major streets	5%	N=13	24%	N=66	42%	N=117	29%	N=80	0%	N=1	100%	N=277
Ease of public parking	10%	N=28	38%	N=104	38%	N=105	12%	N=33	2%	N=6	100%	N=276
Ease of travel by car in Bowling Green	12%	N=34	47%	N=131	33%	N=91	7%	N=19	0%	N=0	100%	N=276
Ease of travel by public transportation in Bowling Green	3%	N=8	12%	N=33	16%	N=43	20%	N=55	49%	N=136	100%	N=275
Ease of travel by bicycle in Bowling Green	5%	N=13	16%	N=43	16%	N=43	17%	N=46	47%	N=130	100%	N=275
Ease of walking in Bowling Green	12%	N=33	32%	N=89	29%	N=80	16%	N=44	11%	N=30	100%	N=275
Availability of paths and walking trails	13%	N=37	40%	N=108	26%	N=71	10%	N=27	11%	N=31	100%	N=274
Air quality	21%	N=59	55%	N=153	16%	N=45	2%	N=6	5%	N=13	100%	N=276
Cleanliness of Bowling Green	23%	N=62	54%	N=147	22%	N=59	1%	N=4	0%	N=1	100%	N=273
Overall appearance of Bowling Green	23%	N=63	60%	N=164	15%	N=41	2%	N=6	1%	N=2	100%	N=276
Public places where people want to spend time	21%	N=58	53%	N=146	19%	N=52	4%	N=12	2%	N=7	100%	N=274
Variety of housing options	16%	N=43	41%	N=112	28%	N=75	8%	N=23	7%	N=19	100%	N=272
Availability of affordable quality housing	11%	N=30	30%	N=84	34%	N=93	18%	N=49	7%	N=20	100%	N=276
Fitness opportunities (including exercise classes and paths or trails, etc.)	31%	N=86	45%	N=126	15%	N=41	3%	N=9	5%	N=15	100%	N=276
Recreational opportunities	22%	N=60	47%	N=129	20%	N=55	6%	N=17	5%	N=15	100%	N=276
Availability of affordable quality food	31%	N=86	50%	N=138	17%	N=46	1%	N=4	1%	N=2	100%	N=277
Availability of affordable quality health care	19%	N=53	43%	N=119	21%	N=59	4%	N=12	12%	N=33	100%	N=275
Availability of preventive health services	20%	N=55	42%	N=115	19%	N=53	2%	N=7	16%	N=45	100%	N=276
Availability of affordable quality mental health care	15%	N=41	19%	N=53	16%	N=44	6%	N=15	44%	N=122	100%	N=276

Table 39: Question 6

Please rate each of the following characteristics as they relate to Bowling Green as a whole:	Excellent		Good		Fair		Poor		Don't know		Total	
	%	N	%	N	%	N	%	N	%	N	%	N
Availability of affordable quality child care/preschool	9%	N=23	20%	N=52	18%	N=48	3%	N=8	50%	N=134	100%	N=266
K-12 education	21%	N=56	37%	N=98	7%	N=19	1%	N=4	33%	N=88	100%	N=265
Adult educational opportunities	21%	N=55	39%	N=105	11%	N=30	3%	N=8	26%	N=69	100%	N=268
Opportunities to attend cultural/arts/music activities	26%	N=70	41%	N=110	21%	N=56	3%	N=9	9%	N=23	100%	N=268
Opportunities to participate in religious or spiritual events and activities	34%	N=92	39%	N=105	9%	N=24	1%	N=2	17%	N=45	100%	N=268
Employment opportunities	23%	N=61	43%	N=114	20%	N=52	8%	N=21	7%	N=20	100%	N=267
Shopping opportunities	25%	N=66	49%	N=131	21%	N=56	5%	N=14	0%	N=0	100%	N=268
Cost of living in Bowling Green	9%	N=24	50%	N=132	33%	N=88	7%	N=17	1%	N=3	100%	N=264
Overall quality of business and service establishments in Bowling Green	24%	N=63	55%	N=146	19%	N=50	1%	N=2	2%	N=5	100%	N=266
Vibrant downtown/commercial area	18%	N=49	39%	N=106	32%	N=86	5%	N=14	5%	N=15	100%	N=269
Overall quality of new development in Bowling Green	23%	N=61	48%	N=128	20%	N=53	3%	N=8	7%	N=19	100%	N=269
Opportunities to participate in social events and activities	15%	N=41	46%	N=123	22%	N=59	7%	N=18	10%	N=26	100%	N=266
Opportunities to volunteer	22%	N=60	43%	N=116	12%	N=31	4%	N=11	19%	N=50	100%	N=267
Opportunities to participate in community matters	19%	N=52	36%	N=97	18%	N=48	6%	N=15	21%	N=55	100%	N=268
Openness and acceptance of the community toward people of diverse backgrounds	20%	N=54	33%	N=89	17%	N=45	17%	N=44	13%	N=35	100%	N=268
Neighborliness of residents in Bowling Green	17%	N=45	38%	N=101	31%	N=84	5%	N=14	9%	N=23	100%	N=268

The National Citizen Survey™

Table 40: Question 7

Please indicate whether or not you have done each of the following in the last 12 months.	No		Yes		Total	
	%	N	%	N	%	N
Made efforts to conserve water	30%	N=81	70%	N=187	100%	N=268
Made efforts to make your home more energy efficient	24%	N=63	76%	N=204	100%	N=267
Observed a code violation or other hazard in Bowling Green (weeds, abandoned buildings, etc.)	53%	N=142	47%	N=124	100%	N=266
Household member was a victim of a crime in Bowling Green	88%	N=234	12%	N=32	100%	N=266
Reported a crime to the police in Bowling Green	76%	N=203	24%	N=64	100%	N=267
Stocked supplies in preparation for an emergency	69%	N=181	31%	N=83	100%	N=265
Campaigned or advocated for an issue, cause or candidate	67%	N=177	33%	N=88	100%	N=265
Contacted the City of Bowling Green (in-person, phone, email or web) for help or information	67%	N=180	33%	N=87	100%	N=267
Contacted Bowling Green elected officials (in-person, phone, email or web) to express your opinion	76%	N=203	24%	N=64	100%	N=266

Table 41: Question 8

In the last 12 months, about how many times, if at all, have you or other household members done each of the following in Bowling Green?	2 times a week or more		2-4 times a month		Once a month or less		Not at all		Total	
	%	N	%	N	%	N	%	N	%	N
Used Bowling Green recreation centers or their services	10%	N=25	15%	N=39	29%	N=77	46%	N=121	100%	N=262
Visited a neighborhood park or City park	15%	N=40	32%	N=86	37%	N=99	15%	N=39	100%	N=264
Used Bowling Green public libraries or their services	11%	N=29	14%	N=38	30%	N=79	45%	N=119	100%	N=265
Participated in religious or spiritual activities in Bowling Green	24%	N=63	23%	N=60	14%	N=37	40%	N=107	100%	N=267
Attended a City-sponsored event	2%	N=6	7%	N=18	44%	N=116	48%	N=127	100%	N=266
Used bus, rail, subway or other public transportation instead of driving	0%	N=1	2%	N=5	3%	N=9	94%	N=250	100%	N=266
Carpooled with other adults or children instead of driving alone	10%	N=26	16%	N=42	17%	N=46	57%	N=152	100%	N=267
Walked or biked instead of driving	11%	N=30	14%	N=37	16%	N=43	59%	N=157	100%	N=266
Volunteered your time to some group/activity in Bowling Green	8%	N=22	12%	N=32	32%	N=84	48%	N=127	100%	N=265
Participated in a club	5%	N=13	10%	N=27	20%	N=52	64%	N=168	100%	N=261
Talked to or visited with your immediate neighbors	25%	N=66	24%	N=64	37%	N=100	14%	N=39	100%	N=268
Done a favor for a neighbor	13%	N=34	24%	N=64	35%	N=94	28%	N=75	100%	N=267

Table 42: Question 9

Thinking about local public meetings (of local elected officials like the City of Bowling Green Board of Commissioners or Warren County Fiscal Court, advisory boards, town halls, HOA, neighborhood watch, etc.), in the last 12 months, about how many times, if at all, have you or other household members attended or watched a local public meeting?	2 times a week or more		2-4 times a month		Once a month or less		Not at all		Total	
	%	N	%	N	%	N	%	N	%	N
Attended a local public meeting	1%	N=3	1%	N=3	21%	N=56	77%	N=203	100%	N=265
Watched (online or on television) a local public meeting	1%	N=1	10%	N=28	20%	N=53	69%	N=184	100%	N=266

Table 43: Question 10

Please rate the quality of each of the following services in Bowling Green:	Excellent		Good		Fair		Poor		Don't know		Total	
	%	N	%	N	%	N	%	N	%	N	%	N
Bowling Green Police Department services	25%	N=66	42%	N=111	13%	N=35	4%	N=11	15%	N=40	100%	N=263
Bowling Green Fire Department services	36%	N=94	40%	N=105	3%	N=8	0%	N=0	21%	N=56	100%	N=263
Ambulance or emergency medical services	32%	N=84	36%	N=94	6%	N=15	0%	N=1	27%	N=70	100%	N=263
Crime prevention	16%	N=41	33%	N=86	12%	N=31	5%	N=13	35%	N=92	100%	N=262
Fire prevention and education	20%	N=52	37%	N=97	11%	N=28	1%	N=2	31%	N=82	100%	N=262
Traffic enforcement	17%	N=45	35%	N=92	20%	N=52	13%	N=33	15%	N=40	100%	N=262

The National Citizen Survey™

Please rate the quality of each of the following services in Bowling Green:	Excellent		Good		Fair		Poor		Don't know		Total	
Street repair	7%	N=19	38%	N=100	34%	N=90	14%	N=37	6%	N=15	100%	N=262
Street cleaning	15%	N=39	40%	N=105	30%	N=77	4%	N=9	12%	N=31	100%	N=262
Street lighting	16%	N=42	54%	N=140	21%	N=54	6%	N=15	3%	N=9	100%	N=261
Snow removal	21%	N=54	46%	N=120	22%	N=56	7%	N=19	4%	N=10	100%	N=259
Sidewalk maintenance	12%	N=32	38%	N=100	33%	N=86	6%	N=14	12%	N=30	100%	N=262
Traffic signal timing	6%	N=16	42%	N=110	31%	N=81	20%	N=52	0%	N=1	100%	N=261
Bus or transit services	4%	N=11	12%	N=32	9%	N=24	11%	N=29	64%	N=167	100%	N=262
Garbage collection	38%	N=98	49%	N=128	7%	N=18	3%	N=8	3%	N=8	100%	N=262
Recycling	25%	N=65	45%	N=118	13%	N=35	5%	N=12	12%	N=33	100%	N=262
Yard waste pick-up	19%	N=50	27%	N=71	16%	N=40	5%	N=14	33%	N=86	100%	N=260
Storm drainage	14%	N=36	38%	N=100	24%	N=63	4%	N=12	20%	N=51	100%	N=262
Drinking water	28%	N=74	47%	N=123	17%	N=44	4%	N=11	4%	N=10	100%	N=262
Power (electric and/or gas) utility	36%	N=94	43%	N=112	15%	N=38	5%	N=12	2%	N=6	100%	N=262
Utility billing	20%	N=53	41%	N=108	25%	N=66	8%	N=20	5%	N=14	100%	N=261
City parks	29%	N=77	48%	N=126	9%	N=23	3%	N=7	11%	N=29	100%	N=261
Recreation programs or classes	16%	N=42	28%	N=74	11%	N=29	1%	N=3	44%	N=115	100%	N=262
Recreation centers or facilities	17%	N=43	39%	N=101	10%	N=25	1%	N=2	34%	N=87	100%	N=258
Land use, planning and zoning	6%	N=15	32%	N=82	19%	N=50	12%	N=32	31%	N=79	100%	N=258
Code enforcement (weeds, abandoned buildings, etc.)	6%	N=15	21%	N=55	24%	N=62	8%	N=20	41%	N=106	100%	N=259
Animal control	12%	N=31	30%	N=79	18%	N=46	5%	N=14	35%	N=91	100%	N=262
Economic development	16%	N=42	39%	N=102	16%	N=41	3%	N=9	26%	N=68	100%	N=261
Health services	18%	N=48	45%	N=117	14%	N=36	1%	N=2	22%	N=58	100%	N=262
Public library services	27%	N=70	36%	N=94	4%	N=11	1%	N=2	33%	N=85	100%	N=262
Public information services	11%	N=29	37%	N=98	11%	N=29	2%	N=5	38%	N=100	100%	N=261
Emergency preparedness (services that prepare the community for natural disasters or other emergency situations)	10%	N=25	47%	N=123	12%	N=30	4%	N=9	28%	N=73	100%	N=260
Preservation of natural areas such as open space, farmlands and greenbelts	10%	N=26	31%	N=79	20%	N=52	12%	N=32	26%	N=66	100%	N=255
Bowling Green open space	9%	N=25	38%	N=98	24%	N=62	9%	N=23	19%	N=50	100%	N=258
City-sponsored special events	7%	N=18	36%	N=92	19%	N=48	2%	N=5	37%	N=95	100%	N=258
Overall customer service by Bowling Green employees (police, receptionists, planners, etc.)	23%	N=61	39%	N=102	21%	N=55	5%	N=13	11%	N=30	100%	N=260
Bowling Green TV Channel 4	10%	N=25	25%	N=65	12%	N=31	3%	N=9	50%	N=131	100%	N=261
City of Bowling Green website	8%	N=20	33%	N=83	15%	N=37	3%	N=8	42%	N=106	100%	N=253

Table 44: Question 11

Overall, how would you rate the quality of the services provided by each of the following?	Excellent		Good		Fair		Poor		Don't know		Total	
The City of Bowling Green	15%	N=38	55%	N=143	18%	N=48	3%	N=7	9%	N=24	100%	N=260
The Federal Government	4%	N=11	28%	N=72	32%	N=83	16%	N=41	20%	N=52	100%	N=259

The National Citizen Survey™

Table 45: Question 12

Please rate the following categories of Bowling Green government performance:	Excellent		Good		Fair		Poor		Don't know		Total	
The value of services for the taxes paid to Bowling Green	9%	N=24	37%	N=95	33%	N=86	12%	N=32	8%	N=22	100%	N=259
The overall direction that Bowling Green is taking	14%	N=37	41%	N=105	28%	N=72	9%	N=22	8%	N=22	100%	N=258
The job Bowling Green government does at welcoming citizen involvement	10%	N=26	33%	N=86	21%	N=54	12%	N=32	23%	N=60	100%	N=259
Overall confidence in Bowling Green government	10%	N=25	36%	N=93	30%	N=77	13%	N=34	12%	N=31	100%	N=259
Generally acting in the best interest of the community	9%	N=22	46%	N=117	24%	N=61	9%	N=24	12%	N=32	100%	N=257
Being honest	8%	N=19	36%	N=91	22%	N=56	13%	N=34	21%	N=55	100%	N=256
Treating all residents fairly	7%	N=17	39%	N=101	23%	N=58	16%	N=42	15%	N=38	100%	N=256

Table 46: Question 13

Please rate how important, if at all, you think it is for the Bowling Green community to focus on each of the following in the coming two years:	Essential		Very important		Somewhat important		Not at all important		Total	
Overall feeling of safety in Bowling Green	65%	N=170	28%	N=72	6%	N=16	1%	N=2	100%	N=260
Overall ease of getting to the places you usually have to visit	38%	N=99	44%	N=116	15%	N=39	3%	N=7	100%	N=260
Quality of overall natural environment in Bowling Green	45%	N=115	41%	N=106	13%	N=33	1%	N=2	100%	N=256
Overall "built environment" of Bowling Green (including overall design, buildings, parks and transportation systems)	29%	N=75	48%	N=124	21%	N=54	2%	N=6	100%	N=258
Health and wellness opportunities in Bowling Green	46%	N=118	37%	N=97	16%	N=40	1%	N=4	100%	N=259
Overall opportunities for education and enrichment	51%	N=130	33%	N=86	16%	N=40	1%	N=1	100%	N=257
Overall economic health of Bowling Green	46%	N=118	46%	N=118	9%	N=23	0%	N=0	100%	N=259
Sense of community	30%	N=78	44%	N=114	24%	N=62	2%	N=5	100%	N=259

Table 47: Question 14

Please rate the following aspects of Bowling Green's parks and recreation facilities:	Excellent		Good		Fair		Poor		Don't know		Total	
Appearance of Bowling Green's parks and recreation facilities	30%	N=78	52%	N=134	8%	N=21	2%	N=6	7%	N=19	100%	N=258
Range of activities available at Bowling Green's parks and recreation facilities	21%	N=56	43%	N=112	16%	N=42	4%	N=10	15%	N=39	100%	N=259

Table 48: Question 15

Please rate the condition of residential and secondary roads within the city limits of Bowling Green (exclude state roads and federal highways that have route numbers, for example, U.S. 231 Scottsville Road, U.S. 31W Nashville Road, etc., which are not maintained by the City of Bowling Green).	Percent	Number
Excellent condition	13%	N=33
Good condition	48%	N=124
Fair condition	29%	N=76
Poor condition	9%	N=22
Don't know/unsure	1%	N=2
Total	100%	N=257

The National Citizen Survey™

Table 49: Question 16

Please indicate how much of a source, if at all, you consider each of the following to be for obtaining information from the City of Bowling Green:	Major source		Minor source		Not a source		Total	
	Percent	N	Percent	N	Percent	N	Percent	N
City website (www.bgky.org)	50%	N=126	29%	N=72	21%	N=54	100%	N=252
Bowling Green Blog	9%	N=23	31%	N=78	59%	N=148	100%	N=249
City's Facebook page	28%	N=71	33%	N=83	39%	N=98	100%	N=252
City's Twitter feed	18%	N=43	26%	N=64	56%	N=137	100%	N=244
City Enews	15%	N=36	28%	N=69	57%	N=140	100%	N=245
Local cable channel 4	31%	N=76	35%	N=88	34%	N=84	100%	N=247

Table 50: Question D1

How often, if at all, do you do each of the following, considering all of the times you could?	Never		Rarely		Sometimes		Usually		Always		Total	
	Percent	N	Percent	N	Percent	N	Percent	N	Percent	N	Percent	N
Recycle at home	19%	N=48	8%	N=21	12%	N=32	16%	N=41	44%	N=112	100%	N=254
Purchase goods or services from a business located in Bowling Green	1%	N=3	2%	N=6	11%	N=28	45%	N=114	41%	N=104	100%	N=255
Eat at least 5 portions of fruits and vegetables a day	2%	N=6	12%	N=32	43%	N=109	32%	N=81	11%	N=27	100%	N=254
Participate in moderate or vigorous physical activity	3%	N=6	18%	N=46	32%	N=80	33%	N=83	15%	N=38	100%	N=254
Read or watch local news (via television, paper, computer, etc.)	2%	N=6	17%	N=44	19%	N=49	30%	N=77	31%	N=80	100%	N=256
Vote in local elections	18%	N=46	11%	N=28	7%	N=18	12%	N=30	52%	N=133	100%	N=255

Table 51: Question D2

Would you say that in general your health is:	Percent	Number
Excellent	14%	N=37
Very good	43%	N=109
Good	30%	N=77
Fair	12%	N=30
Poor	1%	N=2
Total	100%	N=256

Table 52: Question D3

What impact, if any, do you think the economy will have on your family income in the next 6 months? Do you think the impact will be:	Percent	Number
Very positive	13%	N=32
Somewhat positive	29%	N=74
Neutral	47%	N=117
Somewhat negative	9%	N=22
Very negative	2%	N=6
Total	100%	N=250

The National Citizen Survey™

Table 53: Question D4

What is your employment status?	Percent	Number
Working full time for pay	66%	N=169
Working part time for pay	10%	N=26
Unemployed, looking for paid work	2%	N=5
Unemployed, not looking for paid work	3%	N=7
Fully retired	19%	N=50
Total	100%	N=258

Table 54: Question D5

Do you work inside the boundaries of Bowling Green?	Percent	Number
Yes, outside the home	61%	N=152
Yes, from home	7%	N=18
No	32%	N=79
Total	100%	N=249

Table 55: Question D6

How many years have you lived in Bowling Green?	Percent	Number
Less than 2 years	13%	N=35
2 to 5 years	16%	N=43
6 to 10 years	12%	N=31
11 to 20 years	16%	N=41
More than 20 years	43%	N=111
Total	100%	N=260

Table 56: Question D7

Which best describes the building you live in?	Percent	Number
One family house detached from any other houses	53%	N=136
Building with two or more homes (duplex, townhome, apartment or condominium)	43%	N=110
Mobile home	2%	N=5
Other	2%	N=4
Total	100%	N=255

Table 57: Question D8

Is this house, apartment or mobile home...	Percent	Number
Rented	55%	N=139
Owned	45%	N=112
Total	100%	N=251

The National Citizen Survey™

Table 58: Question D9

About how much is your monthly housing cost for the place you live (including rent, mortgage payment, property tax, property insurance and homeowners' association (HOA) fees)?	Percent	Number
Less than \$300 per month	5%	N=12
\$300 to \$599 per month	29%	N=73
\$600 to \$999 per month	34%	N=86
\$1,000 to \$1,499 per month	20%	N=51
\$1,500 to \$2,499 per month	9%	N=23
\$2,500 or more per month	3%	N=8
Total	100%	N=253

Table 59: Question D10

Do any children 17 or under live in your household?	Percent	Number
No	73%	N=185
Yes	27%	N=69
Total	100%	N=255

Table 60: Question D11

Are you or any other members of your household aged 65 or older?	Percent	Number
No	80%	N=204
Yes	20%	N=52
Total	100%	N=256

Table 61: Question D12

How much do you anticipate your household's total income before taxes will be for the current year? (Please include in your total income money from all sources for all persons living in your household.)	Percent	Number
Less than \$25,000	19%	N=49
\$25,000 to \$49,999	25%	N=63
\$50,000 to \$99,999	31%	N=78
\$100,000 to \$149,999	14%	N=36
\$150,000 or more	11%	N=27
Total	100%	N=253

Table 62: Question D13

Are you Spanish, Hispanic or Latino?	Percent	Number
No, not Spanish, Hispanic or Latino	95%	N=237
Yes, I consider myself to be Spanish, Hispanic or Latino	5%	N=12
Total	100%	N=249

The National Citizen Survey™

Table 63: Question D14

What is your race? (Mark one or more races to indicate what race(s) you consider yourself to be.)	Percent	Number
American Indian or Alaskan Native	2%	N=6
Asian, Asian Indian or Pacific Islander	8%	N=20
Black or African American	9%	N=24
White	86%	N=217
Other	4%	N=11

Total may exceed 100% as respondents could select more than one option.

Table 64: Question D15

In which category is your age?	Percent	Number
18 to 24 years	12%	N=32
25 to 34 years	29%	N=74
35 to 44 years	14%	N=37
45 to 54 years	16%	N=40
55 to 64 years	12%	N=30
65 to 74 years	9%	N=24
75 years or older	8%	N=20
Total	100%	N=256

Table 65: Question D16

What is your sex?	Percent	Number
Female	54%	N=131
Male	46%	N=111
Total	100%	N=242

Table 66: Question D17

Do you consider a cell phone or landline your primary telephone number?	Percent	Number
Cell	80%	N=194
Land line	9%	N=21
Both	11%	N=27
Total	100%	N=241

Appendix B: Benchmark Comparisons

Comparison Data

NRC’s database of comparative resident opinion is comprised of resident perspectives gathered in surveys from over 500 communities whose residents evaluated the same kinds of topics on The National Citizen Survey™. The comparison evaluations are from the most recent survey completed in each community; most communities conduct surveys every year or in alternating years. NRC adds the latest results quickly upon survey completion, keeping the benchmark data fresh and relevant. The communities in the database represent a wide geographic and population range. The City of Bowling Green chose to have comparisons made to the entire database and a subset of similar jurisdictions from the database (communities in the Southern region with populations from 35,000-70,000).

Interpreting the Results

Ratings are compared when there are at least five communities in which a similar question was asked. Where comparisons are available, four columns are provided in the table. The first column is Bowling Green’s “percent positive.” The percent positive is the combination of the top two most positive response options (i.e., “excellent” and “good,” “very safe” and “somewhat safe,” etc.), or, in the case of resident behaviors/participation, the percent positive represents the proportion of respondents indicating “yes” or participating in an activity at least once a month. The second column is the rank assigned to Bowling Green’s rating among communities where a similar question was asked. The third column is the number of communities that asked a similar question. The final column shows the comparison of Bowling Green’s rating to the benchmark.

In that final column, Bowling Green’s results are noted as being “higher” than the benchmark, “lower” than the benchmark or “similar” to the benchmark, meaning that the average rating given by Bowling Green residents is statistically similar to or different (greater or lesser) than the benchmark. More extreme differences are noted as “much higher” or “much lower.”

Benchmark Database Characteristics	
Region	Percent
New England	3%
Middle Atlantic	5%
East North Central	15%
West North Central	13%
South Atlantic	22%
East South Central	3%
West South Central	7%
Mountain	16%
Pacific	16%
Population	Percent
Less than 10,000	10%
10,000 to 24,999	22%
25,000 to 49,999	23%
50,000 to 99,999	22%
100,000 or more	23%

National Benchmark Comparisons

Table 67: Community Characteristics General

	Percent positive	Rank	Number of communities in comparison	Comparison to benchmark
The overall quality of life in Bowling Green	84%	182	476	Similar
Overall image or reputation of Bowling Green	82%	143	363	Similar
Bowling Green as a place to live	91%	154	408	Similar
Your neighborhood as a place to live	81%	169	324	Similar
Bowling Green as a place to raise children	88%	162	397	Similar
Bowling Green as a place to retire	84%	52	371	Higher
Overall appearance of Bowling Green	83%	137	372	Similar

Table 68: Community Characteristics by Facet

		Percent positive	Rank	Number of communities in comparison	Comparison to benchmark	
Safety	Overall feeling of safety in Bowling Green	84%	195	346	Similar	
	In your neighborhood during the day	92%	218	369	Similar	
	In Bowling Green's downtown/commercial area during the day	91%	188	323	Similar	
Mobility	Overall ease of getting to the places you usually have to visit	62%	196	249	Similar	
	Availability of paths and walking trails	60%	202	324	Similar	
	Ease of walking in Bowling Green	50%	242	312	Similar	
	Ease of travel by bicycle in Bowling Green	39%	246	314	Lower	
	Ease of travel by public transportation in Bowling Green	30%	150	211	Similar	
	Ease of travel by car in Bowling Green	60%	194	313	Similar	
	Ease of public parking	49%	128	208	Similar	
	Traffic flow on major streets	29%	294	357	Lower	
Natural Environment	Quality of overall natural environment in Bowling Green	72%	182	285	Similar	
	Cleanliness of Bowling Green	77%	147	292	Similar	
	Air quality	80%	134	252	Similar	
Built Environment	Overall "built environment" of Bowling Green (including overall design, buildings, parks and transportation systems)	62%	105	238	Similar	
	Overall quality of new development in Bowling Green	76%	23	297	Higher	
	Availability of affordable quality housing	44%	127	310	Similar	
	Variety of housing options	61%	100	288	Similar	
	Public places where people want to spend time	76%	82	231	Similar	
Economy	Overall economic health of Bowling Green	81%	64	244	Similar	
	Vibrant downtown/commercial area	61%	60	222	Similar	
	Overall quality of business and service establishments in Bowling Green	80%	29	279	Higher	
	Cost of living in Bowling Green	60%	40	241	Higher	
	Shopping opportunities	74%	73	303	Higher	
	Employment opportunities	71%	13	319	Much higher	
	Bowling Green as a place to visit	73%	97	260	Similar	
	Bowling Green as a place to work	78%	61	374	Higher	
	Recreation and Wellness	Health and wellness opportunities in Bowling Green	74%	108	239	Similar
		Availability of affordable quality mental health care	61%	21	210	Higher
Availability of preventive health services		74%	61	240	Similar	
Availability of affordable quality health care		71%	79	267	Similar	
Availability of affordable quality food		82%	16	245	Higher	
Recreational opportunities	72%	128	308	Similar		

The National Citizen Survey™

		Percent positive	Rank	Number of communities in comparison	Comparison to benchmark
	Fitness opportunities (including exercise classes and paths or trails, etc.)	81%	51	229	Similar
	Overall opportunities for education and enrichment	82%	67	241	Similar
Education and Enrichment	Opportunities to participate in religious or spiritual events and activities	88%	15	207	Similar
	Opportunities to attend cultural/arts/music activities	73%	61	306	Higher
	Adult educational opportunities	81%	20	218	Higher
	K-12 education	87%	85	279	Similar
	Availability of affordable quality child care/preschool	57%	79	259	Similar
		Opportunities to participate in social events and activities	68%	108	268
Community Engagement	Neighborliness of Bowling Green	60%	121	233	Similar
	Openness and acceptance of the community toward people of diverse backgrounds	62%	174	301	Similar
	Opportunities to participate in community matters	70%	71	280	Similar
	Opportunities to volunteer	81%	65	272	Similar

Table 69: Governance General

	Percent positive	Rank	Number of communities in comparison	Comparison to benchmark
Services provided by the City of Bowling Green	77%	226	449	Similar
Overall customer service by Bowling Green employees (police, receptionists, planners, etc.)	71%	218	392	Similar
Value of services for the taxes paid to Bowling Green	50%	228	418	Similar
Overall direction that Bowling Green is taking	60%	136	329	Similar
Job Bowling Green government does at welcoming citizen involvement	56%	148	328	Similar
Overall confidence in Bowling Green government	52%	138	244	Similar
Generally acting in the best interest of the community	62%	109	244	Similar
Being honest	55%	154	236	Similar
Treating all residents fairly	54%	158	241	Similar
Services provided by the Federal Government	40%	122	254	Similar

Table 70: Governance by Facet

		Percent positive	Rank	Number of communities in comparison	Comparison to benchmark
Safety	Police Department services	80%	260	487	Similar
	Fire Department services	96%	156	407	Similar
	Ambulance or emergency medical services	92%	167	367	Similar
	Crime prevention	75%	160	376	Similar
	Fire prevention and education	83%	118	296	Similar
	Animal control	65%	152	357	Similar
	Emergency preparedness (services that prepare the community for natural disasters or other emergency situations)	79%	79	285	Similar
		Traffic enforcement	62%	225	389
Mobility	Street repair	48%	211	413	Similar
	Street cleaning	62%	146	333	Similar
	Street lighting	73%	68	344	Similar
	Snow removal	70%	112	305	Similar
	Sidewalk maintenance	57%	123	335	Similar
	Traffic signal timing	49%	183	270	Similar
	Bus or transit services	45%	159	234	Similar
	Garbage collection	89%	105	374	Similar

The National Citizen Survey™

		Percent positive	Rank	Number of communities in comparison	Comparison to benchmark
Natural Environment	Recycling	79%	219	375	Similar
	Yard waste pick-up	69%	172	284	Similar
	Drinking water	78%	101	332	Similar
	Preservation of natural areas such as open space, farmlands and greenbelts	56%	187	263	Similar
	Bowling Green open space	59%	138	219	Similar
Built Environment	Storm drainage	65%	170	370	Similar
	Power (electric and/or gas) utility	80%	37	181	Similar
	Utility billing	65%	127	214	Similar
	Land use, planning and zoning	54%	134	315	Similar
	Code enforcement (weeds, abandoned buildings, etc.)	46%	203	404	Similar
Economy	Economic development	74%	26	295	Higher
Recreation and Wellness	City parks	87%	131	340	Similar
	Recreation programs or classes	79%	94	340	Similar
	Recreation centers or facilities	84%	65	285	Similar
	Health services	81%	45	221	Similar
	City-sponsored special events	68%	147	264	Similar
Education and Enrichment	Public library services	93%	105	358	Similar
Community Engagement	Public information services	79%	86	294	Similar

Table 71: Participation General

	Percent positive	Rank	Number of communities in comparison	Comparison to benchmark
Sense of community	63%	177	321	Similar
Recommend living in Bowling Green to someone who asks	90%	122	293	Similar
Remain in Bowling Green for the next five years	82%	188	284	Similar
Contacted Bowling Green (in-person, phone, email or web) for help or information	33%	304	331	Lower

Table 72: Participation by Facet

		Percent positive	Rank	Number of communities in comparison	Comparison to benchmark
Safety	Stocked supplies in preparation for an emergency	31%	122	210	Similar
	Did NOT report a crime to the police	76%	161	236	Similar
	Household member was NOT a victim of a crime	88%	163	281	Similar
Mobility	Used bus, rail, subway or other public transportation instead of driving	6%	164	191	Much lower
	Carpooled with other adults or children instead of driving alone	43%	108	223	Similar
	Walked or biked instead of driving	41%	202	232	Lower
Natural Environment	Made efforts to conserve water	70%	213	218	Lower
	Made efforts to make your home more energy efficient	76%	100	219	Similar
	Recycle at home	73%	230	265	Lower
Built Environment	Did NOT observe a code violation or other hazard in Bowling Green	53%	120	225	Similar
	NOT experiencing housing costs stress	74%	77	261	Similar
Economy	Purchase goods or services from a business located in Bowling Green	96%	142	229	Similar
	Economy will have positive impact on income	42%	28	262	Higher

The National Citizen Survey™

		Percent positive	Rank	Number of communities in comparison	Comparison to benchmark
	Work inside boundaries of Bowling Green	68%	20	230	Much higher
Recreation and Wellness	Used Bowling Green recreation centers or their services	54%	159	242	Similar
	Visited a neighborhood park or City park	85%	138	276	Similar
	Eat at least 5 portions of fruits and vegetables a day	85%	82	221	Similar
	Participate in moderate or vigorous physical activity	80%	196	225	Similar
	In very good to excellent health	57%	184	225	Similar
	Used Bowling Green public libraries or their services	55%	200	249	Similar
Education and Enrichment	Participated in religious or spiritual activities in Bowling Green	60%	29	204	Higher
	Attended City-sponsored event	52%	136	232	Similar
	Campaigned or advocated for an issue, cause or candidate	33%	28	213	Similar
Community Engagement	Contacted Bowling Green elected officials (in-person, phone, email or web) to express your opinion	24%	36	228	Similar
	Volunteered your time to some group/activity in Bowling Green	52%	50	270	Higher
	Participated in a club	36%	48	245	Similar
	Talked to or visited with your immediate neighbors	86%	201	226	Similar
	Done a favor for a neighbor	72%	209	222	Similar
	Attended a local public meeting	23%	97	270	Similar
	Watched (online or on television) a local public meeting	31%	56	231	Similar
	Read or watch local news (via television, paper, computer, etc.)	81%	191	230	Similar
	Vote in local elections	71%	241	264	Lower

Communities included in national comparisons

The communities included in Bowling Green's comparisons are listed on the following pages along with their population according to the 2010 Census.

Adams County, CO	441,603	Ashland town, MA	16,593
Airway Heights city, WA	6,114	Ashland town, VA	7,225
Albany city, OR	50,158	Aspen city, CO	6,658
Albemarle County, VA	98,970	Athens-Clarke County, GA	115,452
Albert Lea city, MN	18,016	Auburn city, AL	53,380
Alexandria city, VA	139,966	Augusta CCD, GA	134,777
Algonquin village, IL	30,046	Aurora city, CO	325,078
Aliso Viejo city, CA	47,823	Austin city, TX	790,390
Altoona city, IA	14,541	Avon town, CO	6,447
American Canyon city, CA	19,454	Avon town, IN	12,446
Ames city, IA	58,965	Avondale city, AZ	76,238
Andover CDP, MA	8,762	Azusa city, CA	46,361
Ankeny city, IA	45,582	Bainbridge Island city, WA	23,025
Ann Arbor city, MI	113,934	Baltimore city, MD	620,961
Annapolis city, MD	38,394	Bartonville town, TX	1,469
Apache Junction city, AZ	35,840	Battle Creek city, MI	52,347
Arapahoe County, CO	572,003	Bay City city, MI	34,932
Arkansas City city, AR	366	Bay Village city, OH	15,651
Arlington city, TX	365,438	Baytown city, TX	71,802
Arvada city, CO	106,433	Bedford city, TX	46,979
Asheville city, NC	83,393	Bedford town, MA	13,320
Ashland city, OR	20,078	Bellevue city, WA	122,363

The National Citizen Survey™

Bellingham city, WA	80,885	Clinton city, SC	8,490
Benbrook city, TX	21,234	Clive city, IA	15,447
Bend city, OR	76,639	Clovis city, CA	95,631
Bethlehem township, PA	23,730	College Park city, MD	30,413
Bettendorf city, IA	33,217	College Station city, TX	93,857
Billings city, MT	104,170	Colleyville city, TX	22,807
Blaine city, MN	57,186	Columbia city, MO	108,500
Bloomfield Hills city, MI	3,869	Columbia city, SC	129,272
Bloomington city, IN	80,405	Columbia Falls city, MT	4,688
Bloomington city, MN	82,893	Commerce City city, CO	45,913
Blue Springs city, MO	52,575	Concord city, CA	122,067
Boise City city, ID	205,671	Concord town, MA	17,668
Bonner Springs city, KS	7,314	Conshohocken borough, PA	7,833
Boone County, KY	118,811	Coolidge city, AZ	11,825
Boulder city, CO	97,385	Coon Rapids city, MN	61,476
Bowling Green city, KY	58,067	Copperas Cove city, TX	32,032
Bozeman city, MT	37,280	Coral Springs city, FL	121,096
Brentwood city, MO	8,055	Coronado city, CA	18,912
Brentwood city, TN	37,060	Corvallis city, OR	54,462
Brighton city, CO	33,352	Cottonwood Heights city, UT	33,433
Brighton city, MI	7,444	Creve Coeur city, MO	17,833
Bristol city, TN	26,702	Cross Roads town, TX	1,563
Broken Arrow city, OK	98,850	Cupertino city, CA	58,302
Brookfield city, WI	37,920	Dacono city, CO	4,152
Brookline CDP, MA	58,732	Dade City city, FL	6,437
Brooklyn Center city, MN	30,104	Dakota County, MN	398,552
Brooklyn city, OH	11,169	Dallas city, OR	14,583
Broomfield city, CO	55,889	Dallas city, TX	1,197,816
Brownsburg town, IN	21,285	Danville city, KY	16,218
Buffalo Grove village, IL	41,496	Dardenne Prairie city, MO	11,494
Burien city, WA	33,313	Darien city, IL	22,086
Burleson city, TX	36,690	Davenport city, FL	2,888
Burlingame city, CA	28,806	Davenport city, IA	99,685
Cabarrus County, NC	178,011	Davidson town, NC	10,944
Cambridge city, MA	105,162	Dayton city, OH	141,527
Cannon Beach city, OR	1,690	Dayton town, WY	757
Cañon City city, CO	16,400	Dearborn city, MI	98,153
Canton city, SD	3,057	Decatur city, GA	19,335
Cape Coral city, FL	154,305	Del Mar city, CA	4,161
Cape Girardeau city, MO	37,941	DeLand city, FL	27,031
Carlisle borough, PA	18,682	Delaware city, OH	34,753
Carlsbad city, CA	105,328	Delray Beach city, FL	60,522
Carroll city, IA	10,103	Denison city, TX	22,682
Cartersville city, GA	19,731	Denton city, TX	113,383
Cary town, NC	135,234	Denver city, CO	600,158
Castine town, ME	1,366	Derby city, KS	22,158
Castle Pines North city, CO	10,360	Des Moines city, IA	203,433
Castle Rock town, CO	48,231	Des Peres city, MO	8,373
Cedar Hill city, TX	45,028	Destin city, FL	12,305
Cedar Rapids city, IA	126,326	Dothan city, AL	65,496
Celina city, TX	6,028	Douglas County, CO	285,465
Centennial city, CO	100,377	Dover city, NH	29,987
Chandler city, AZ	236,123	Dublin city, CA	46,036
Chandler city, TX	2,734	Dublin city, OH	41,751
Chanhassen city, MN	22,952	Duluth city, MN	86,265
Chapel Hill town, NC	57,233	Durham city, NC	228,330
Chardon city, OH	5,148	Durham County, NC	267,587
Charles County, MD	146,551	Dyer town, IN	16,390
Charlotte city, NC	731,424	Eagan city, MN	64,206
Charlotte County, FL	159,978	Eagle Mountain city, UT	21,415
Charlottesville city, VA	43,475	Eagle town, CO	6,508
Chattanooga city, TN	167,674	East Grand Forks city, MN	8,601
Chautauqua town, NY	4,464	East Lansing city, MI	48,579
Chesterfield County, VA	316,236	Eau Claire city, WI	65,883
Citrus Heights city, CA	83,301	Eden Prairie city, MN	60,797
Clackamas County, OR	375,992	Eden town, VT	1,323
Clarendon Hills village, IL	8,427	Edgerton city, KS	1,671
Clayton city, MO	15,939	Edgewater city, CO	5,170
Clearwater city, FL	107,685	Edina city, MN	47,941
Cleveland Heights city, OH	46,121	Edmond city, OK	81,405

The National Citizen Survey™

Edmonds city, WA.....	39,709	High Point city, NC.....	104,371
El Cerrito city, CA.....	23,549	Highland Park city, IL.....	29,763
El Dorado County, CA.....	181,058	Highlands Ranch CDP, CO.....	96,713
El Paso de Robles (Paso Robles) city, CA.....	29,793	Holland city, MI.....	33,051
Elk Grove city, CA.....	153,015	Homer Glen village, IL.....	24,220
Elko New Market city, MN.....	4,110	Honolulu County, HI.....	953,207
Elmhurst city, IL.....	44,121	Hooksett town, NH.....	13,451
Encinitas city, CA.....	59,518	Hopkins city, MN.....	17,591
Englewood city, CO.....	30,255	Hopkinton town, MA.....	14,925
Erie town, CO.....	18,135	Hoquiam city, WA.....	8,726
Escambia County, FL.....	297,619	Horry County, SC.....	269,291
Estes Park town, CO.....	5,858	Howard village, WI.....	17,399
Euclid city, OH.....	48,920	Hudson city, OH.....	22,262
Fairview town, TX.....	7,248	Hudson town, CO.....	2,356
Farmers Branch city, TX.....	28,616	Huntley village, IL.....	24,291
Farmersville city, TX.....	3,301	Hurst city, TX.....	37,337
Farmington Hills city, MI.....	79,740	Hutchinson city, MN.....	14,178
Farmington town, CT.....	25,340	Hutto city, TX.....	14,698
Fayetteville city, NC.....	200,564	Independence city, MO.....	116,830
Fernandina Beach city, FL.....	11,487	Indianola city, IA.....	14,782
Fishers town, IN.....	76,794	Indio city, CA.....	76,036
Flagstaff city, AZ.....	65,870	Iowa City city, IA.....	67,862
Flower Mound town, TX.....	64,669	Irving city, TX.....	216,290
Forest Grove city, OR.....	21,083	Issaquah city, WA.....	30,434
Fort Collins city, CO.....	143,986	Jackson city, MO.....	13,758
Fort Lauderdale city, FL.....	165,521	Jackson County, MI.....	160,248
Fort Smith city, AR.....	86,209	James City County, VA.....	67,009
Franklin city, TN.....	62,487	Jefferson County, NY.....	116,229
Fremont city, CA.....	214,089	Jefferson Parish, LA.....	432,552
Friendswood city, TX.....	35,805	Johnson City city, TN.....	63,152
Fruita city, CO.....	12,646	Johnston city, IA.....	17,278
Gahanna city, OH.....	33,248	Jupiter town, FL.....	55,156
Gaithersburg city, MD.....	59,933	Kalamazoo city, MI.....	74,262
Galveston city, TX.....	47,743	Kansas City city, KS.....	145,786
Gardner city, KS.....	19,123	Kansas City city, MO.....	459,787
Georgetown city, TX.....	47,400	Keizer city, OR.....	36,478
Germantown city, TN.....	38,844	Kenmore city, WA.....	20,460
Gilbert town, AZ.....	208,453	Kennedale city, TX.....	6,763
Gillette city, WY.....	29,087	Kennett Square borough, PA.....	6,072
Glen Ellyn village, IL.....	27,450	Kent city, WA.....	92,411
Glendora city, CA.....	50,073	Kerrville city, TX.....	22,347
Glenview village, IL.....	44,692	Kettering city, OH.....	56,163
Globe city, AZ.....	7,532	Key West city, FL.....	24,649
Golden city, CO.....	18,867	King City city, CA.....	12,874
Golden Valley city, MN.....	20,371	King County, WA.....	1,931,249
Goodyear city, AZ.....	65,275	Kirkland city, WA.....	48,787
Grafton village, WI.....	11,459	Kirkwood city, MO.....	27,540
Grand Blanc city, MI.....	8,276	Knoxville city, IA.....	7,313
Grants Pass city, OR.....	34,533	La Plata town, MD.....	8,753
Grass Valley city, CA.....	12,860	La Porte city, TX.....	33,800
Greeley city, CO.....	92,889	La Vista city, NE.....	15,758
Greenville city, NC.....	84,554	Lafayette city, CO.....	24,453
Greenwich town, CT.....	61,171	Laguna Beach city, CA.....	22,723
Greenwood Village city, CO.....	13,925	Laguna Niguel city, CA.....	62,979
Greer city, SC.....	25,515	Lake Forest city, IL.....	19,375
Gunnison County, CO.....	15,324	Lake in the Hills village, IL.....	28,965
Hailey city, ID.....	7,960	Lake Stevens city, WA.....	28,069
Haines Borough, AK.....	2,508	Lake Worth city, FL.....	34,910
Haltom City city, TX.....	42,409	Lake Zurich village, IL.....	19,631
Hamilton city, OH.....	62,477	Lakeville city, MN.....	55,954
Hamilton town, MA.....	7,764	Lakewood city, CO.....	142,980
Hampton city, VA.....	137,436	Lakewood city, WA.....	58,163
Hanover County, VA.....	99,863	Lancaster County, SC.....	76,652
Harrisburg city, SD.....	4,089	Lane County, OR.....	351,715
Harrisonburg city, VA.....	48,914	Lansing city, MI.....	114,297
Harrisonville city, MO.....	10,019	Laramie city, WY.....	30,816
Hastings city, MN.....	22,172	Larimer County, CO.....	299,630
Hayward city, CA.....	144,186	Las Cruces city, NM.....	97,618
Henderson city, NV.....	257,729	Las Vegas city, NM.....	13,753
Herndon town, VA.....	23,292	Las Vegas city, NV.....	583,756

The National Citizen Survey™

Lawrence city, KS.....	87,643	Moraga town, CA	16,016
Lawrenceville city, GA	28,546	Morristown city, TN	29,137
Lee's Summit city, MO	91,364	Morrisville town, NC	18,576
Lehi city, UT	47,407	Morro Bay city, CA	10,234
Lenexa city, KS	48,190	Mountain Village town, CO.....	1,320
Lewis County, NY	27,087	Mountlake Terrace city, WA	19,909
Lewiston city, ID	31,894	Murphy city, TX	17,708
Lewisville city, TX.....	95,290	Naperville city, IL	141,853
Lewisville town, NC	12,639	Napoleon city, OH	8,749
Libertyville village, IL.....	20,315	Nederland city, TX	17,547
Lincoln city, NE	258,379	Needham CDP, MA	28,886
Lincolnwood village, IL	12,590	Nevada City city, CA	3,068
Lindsborg city, KS	3,458	Nevada County, CA	98,764
Little Chute village, WI	10,449	New Braunfels city, TX	57,740
Littleton city, CO	41,737	New Brighton city, MN.....	21,456
Livermore city, CA	80,968	New Hanover County, NC	202,667
Lombard village, IL	43,165	New Hope city, MN	20,339
Lone Tree city, CO	10,218	New Orleans city, LA	343,829
Long Grove village, IL	8,043	New Port Richey city, FL.....	14,911
Longmont city, CO	86,270	New Smyrna Beach city, FL	22,464
Longview city, TX	80,455	New Ulm city, MN	13,522
Lonsdale city, MN	3,674	Newberg city, OR	22,068
Los Alamos County, NM.....	17,950	Newport city, RI	24,672
Los Altos Hills town, CA	7,922	Newport News city, VA	180,719
Louisville city, CO	18,376	Newton city, IA	15,254
Lower Merion township, PA	57,825	Noblesville city, IN	51,969
Lynchburg city, VA	75,568	Nogales city, AZ	20,837
Lynnwood city, WA	35,836	Norcross city, GA	9,116
Macomb County, MI	840,978	Norfolk city, VA	242,803
Manassas city, VA	37,821	North Mankato city, MN.....	13,394
Manhattan Beach city, CA	35,135	North Port city, FL.....	57,357
Manhattan city, KS	52,281	North Richland Hills city, TX	63,343
Mankato city, MN	39,309	North Yarmouth town, ME	3,565
Maple Grove city, MN	61,567	Novato city, CA	51,904
Maplewood city, MN.....	38,018	Novi city, MI	55,224
Maricopa County, AZ	3,817,117	O'Fallon city, IL	28,281
Marion city, IA	34,768	O'Fallon city, MO.....	79,329
Mariposa County, CA	18,251	Oak Park village, IL	51,878
Marshfield city, WI	19,118	Oakland city, CA	390,724
Martinez city, CA	35,824	Oakley city, CA	35,432
Marysville city, WA	60,020	Oklahoma City city, OK.....	579,999
Matthews town, NC.....	27,198	Olathe city, KS	125,872
McAllen city, TX	129,877	Old Town city, ME	7,840
McKinney city, TX.....	131,117	Olmsted County, MN	144,248
McMinnville city, OR	32,187	Olympia city, WA	46,478
Menlo Park city, CA	32,026	Orange village, OH	3,323
Menomonee Falls village, WI	35,626	Orland Park village, IL	56,767
Mercer Island city, WA	22,699	Orleans Parish, LA	343,829
Meridian charter township, MI	39,688	Oshkosh city, WI	66,083
Meridian city, ID	75,092	Oshtemo charter township, MI	21,705
Merriam city, KS.....	11,003	Oswego village, IL.....	30,355
Mesa city, AZ	439,041	Otsego County, MI	24,164
Mesa County, CO	146,723	Ottawa County, MI	263,801
Miami Beach city, FL	87,779	Overland Park city, KS.....	173,372
Miami city, FL	399,457	Paducah city, KY	25,024
Middleton city, WI	17,442	Palm Beach Gardens city, FL.....	48,452
Midland city, MI	41,863	Palm Coast city, FL.....	75,180
Milford city, DE	9,559	Palo Alto city, CA	64,403
Milton city, GA	32,661	Palos Verdes Estates city, CA	13,438
Minneapolis city, MN	382,578	Papillion city, NE	18,894
Minnetrista city, MN	6,384	Paradise Valley town, AZ	12,820
Missouri City city, TX	67,358	Park City city, UT	7,558
Modesto city, CA	201,165	Parker town, CO	45,297
Monterey city, CA.....	27,810	Parkland city, FL	23,962
Montgomery city, MN	2,956	Pasco city, WA.....	59,781
Montgomery County, MD	971,777	Pasco County, FL	464,697
Monticello city, UT	1,972	Payette city, ID	7,433
Montrose city, CO	19,132	Pearland city, TX.....	91,252
Monument town, CO	5,530	Peoria city, AZ	154,065
Mooresville town, NC.....	32,711	Peoria city, IL	115,007

The National Citizen Survey™

Pflugerville city, TX	46,936	Santa Fe city, NM.....	67,947
Phoenix city, AZ	1,445,632	Santa Fe County, NM	144,170
Pinehurst village, NC	13,124	Santa Monica city, CA.....	89,736
Piqua city, OH.....	20,522	Sarasota County, FL.....	379,448
Pitkin County, CO.....	17,148	Savage city, MN.....	26,911
Plano city, TX	259,841	Schaumburg village, IL.....	74,227
Platte City city, MO.....	4,691	Schertz city, TX.....	31,465
Pleasant Hill city, IA	8,785	Scott County, MN.....	129,928
Pleasanton city, CA	70,285	Scottsdale city, AZ	217,385
Plymouth city, MN.....	70,576	Seaside city, CA	33,025
Polk County, IA.....	430,640	Sedona city, AZ.....	10,031
Pompano Beach city, FL	99,845	Sevierville city, TN	14,807
Port Orange city, FL.....	56,048	Shakopee city, MN	37,076
Port St. Lucie city, FL	164,603	Sharonville city, OH.....	13,560
Portland city, OR.....	583,776	Shawnee city, KS	62,209
Post Falls city, ID	27,574	Shawnee city, OK.....	29,857
Powell city, OH	11,500	Sherborn town, MA	4,119
Prince William County, VA.....	402,002	Shoreline city, WA.....	53,007
Prior Lake city, MN.....	22,796	Shoreview city, MN	25,043
Pueblo city, CO	106,595	Shorewood village, IL	15,615
Purcellville town, VA.....	7,727	Shorewood village, WI	13,162
Queen Creek town, AZ	26,361	Sierra Vista city, AZ.....	43,888
Raleigh city, NC	403,892	Silverton city, OR	9,222
Ramsey city, MN.....	23,668	Sioux Center city, IA	7,048
Raymond town, ME.....	4,436	Sioux Falls city, SD.....	153,888
Raymore city, MO	19,206	Skokie village, IL.....	64,784
Redmond city, OR.....	26,215	Snellville city, GA	18,242
Redmond city, WA	54,144	Snoqualmie city, WA	10,670
Redwood City city, CA.....	76,815	Snowmass Village town, CO.....	2,826
Reno city, NV.....	225,221	Somerset town, MA.....	18,165
Reston CDP, VA	58,404	South Jordan city, UT.....	50,418
Richland city, WA.....	48,058	South Lake Tahoe city, CA.....	21,403
Richmond city, CA.....	103,701	Southlake city, TX	26,575
Richmond Heights city, MO.....	8,603	Spearfish city, SD.....	10,494
Rio Rancho city, NM.....	87,521	Spring Hill city, KS.....	5,437
River Falls city, WI	15,000	Springboro city, OH.....	17,409
Riverside city, CA.....	303,871	Springfield city, MO.....	159,498
Riverside city, MO	2,937	Springville city, UT	29,466
Roanoke city, VA.....	97,032	St. Augustine city, FL	12,975
Roanoke County, VA	92,376	St. Charles city, IL.....	32,974
Rochester Hills city, MI.....	70,995	St. Cloud city, FL.....	35,183
Rock Hill city, SC.....	66,154	St. Cloud city, MN	65,842
Rockville city, MD.....	61,209	St. Joseph city, MO	76,780
Roeland Park city, KS	6,731	St. Joseph town, WI.....	3,842
Rogers city, MN	8,597	St. Louis County, MN.....	200,226
Rohnert Park city, CA	40,971	State College borough, PA	42,034
Rolla city, MO	19,559	Steamboat Springs city, CO	12,088
Roselle village, IL.....	22,763	Sterling Heights city, MI	129,699
Rosemount city, MN.....	21,874	Sugar Grove village, IL	8,997
Rosenberg city, TX.....	30,618	Sugar Land city, TX.....	78,817
Roseville city, MN.....	33,660	Suisun City city, CA	28,111
Round Rock city, TX.....	99,887	Summit city, NJ.....	21,457
Royal Oak city, MI.....	57,236	Summit County, UT.....	36,324
Royal Palm Beach village, FL.....	34,140	Summit village, IL	11,054
Saco city, ME.....	18,482	Sunnyvale city, CA	140,081
Sacramento city, CA	466,488	Surprise city, AZ.....	117,517
Sahuarita town, AZ	25,259	Suwanee city, GA.....	15,355
Salida city, CO	5,236	Tacoma city, WA	198,397
Sammamish city, WA	45,780	Takoma Park city, MD	16,715
San Anselmo town, CA	12,336	Tamarac city, FL	60,427
San Diego city, CA	1,307,402	Temecula city, CA	100,097
San Francisco city, CA	805,235	Tempe city, AZ.....	161,719
San Jose city, CA	945,942	Temple city, TX.....	66,102
San Juan County, NM.....	130,044	Texarkana city, TX	36,411
San Marcos city, CA	83,781	The Woodlands CDP, TX.....	93,847
San Marcos city, TX.....	44,894	Thousand Oaks city, CA.....	126,683
San Rafael city, CA.....	57,713	Tigard city, OR.....	48,035
Sanford city, FL.....	53,570	Tracy city, CA	82,922
Sangamon County, IL.....	197,465	Trinidad CCD, CO.....	12,017
Santa Clarita city, CA.....	176,320	Tualatin city, OR.....	26,054

The National Citizen Survey™

Tulsa city, OK	391,906	West Des Moines city, IA	56,609
Twin Falls city, ID	44,125	Western Springs village, IL	12,975
Tyler city, TX	96,900	Westerville city, OH	36,120
Unalaska city, AK	4,376	Westlake town, TX	992
University Heights city, OH	13,539	Westminster city, CO	106,114
University Park city, TX	23,068	Weston town, MA	11,261
Upper Arlington city, OH	33,771	Wheat Ridge city, CO	30,166
Urbandale city, IA	39,463	White House city, TN	10,255
Vail town, CO	5,305	Wichita city, KS	382,368
Vancouver city, WA	161,791	Williamsburg city, VA	14,068
Ventura CCD, CA	111,889	Willowbrook village, IL	8,540
Vernon Hills village, IL	25,113	Wilmington city, NC	106,476
Vestavia Hills city, AL	34,033	Wilsonville city, OR	19,509
Victoria city, MN	7,345	Windsor town, CO	18,644
Vienna town, VA	15,687	Windsor town, CT	29,044
Virginia Beach city, VA	437,994	Winnetka village, IL	12,187
Walnut Creek city, CA	64,173	Winter Garden city, FL	34,568
Warrensburg city, MO	18,838	Woodbury city, MN	61,961
Washington County, MN	238,136	Woodinville city, WA	10,938
Washington town, NH	1,123	Woodland city, CA	55,468
Washoe County, NV	421,407	Wrentham town, MA	10,955
Washougal city, WA	14,095	Wyandotte County, KS	157,505
Wauwatosa city, WI	46,396	Yakima city, WA	91,067
Waverly city, IA	9,874	York County, VA	65,464
Weddington town, NC	9,459	Yorktown town, IN	9,405
Wentzville city, MO	29,070	Yorkville city, IL	16,921
West Carrollton city, OH	13,143	Yountville city, CA	2,933
West Chester borough, PA	18,461		

Custom Community Comparisons

Table 73: Community Characteristics General

	Percent positive	Rank	Number of communities in comparison	Comparison to benchmark
The overall quality of life in Bowling Green	84%	14	37	Similar
Overall image or reputation of Bowling Green	82%	12	29	Similar
Bowling Green as a place to live	91%	10	26	Similar
Your neighborhood as a place to live	81%	8	21	Similar
Bowling Green as a place to raise children	88%	11	30	Similar
Bowling Green as a place to retire	84%	6	29	Similar
Overall appearance of Bowling Green	83%	9	31	Similar

Table 74: Community Characteristics by Facet

		Percent positive	Rank	Number of communities in comparison	Comparison to benchmark
Safety	Overall feeling of safety in Bowling Green	84%	13	25	Similar
	In your neighborhood during the day	92%	16	28	Similar
	In Bowling Green's downtown/commercial area during the day	91%	12	22	Similar
Mobility	Overall ease of getting to the places you usually have to visit	62%	13	17	Similar
	Availability of paths and walking trails	60%	12	24	Similar
	Ease of walking in Bowling Green	50%	15	21	Similar
	Ease of travel by bicycle in Bowling Green	39%	16	21	Similar
	Ease of travel by public transportation in Bowling Green	30%	9	12	Similar
	Ease of travel by car in Bowling Green	60%	15	22	Similar
	Ease of public parking	49%	11	15	Similar
	Traffic flow on major streets	29%	25	30	Similar
Natural Environment	Quality of overall natural environment in Bowling Green	72%	12	20	Similar
	Cleanliness of Bowling Green	77%	8	20	Similar
	Air quality	80%	10	19	Similar

The National Citizen Survey™

		Percent positive	Rank	Number of communities in comparison	Comparison to benchmark
Built Environment	Overall "built environment" of Bowling Green (including overall design, buildings, parks and transportation systems)	62%	7	14	Similar
	Overall quality of new development in Bowling Green	76%	3	24	Higher
	Availability of affordable quality housing	44%	7	21	Similar
	Variety of housing options	61%	9	20	Similar
	Public places where people want to spend time	76%	6	14	Similar
Economy	Overall economic health of Bowling Green	81%	5	15	Similar
	Vibrant downtown/commercial area	61%	4	15	Similar
	Overall quality of business and service establishments in Bowling Green	80%	5	19	Similar
	Cost of living in Bowling Green	60%	5	14	Similar
	Shopping opportunities	74%	7	19	Similar
	Employment opportunities	71%	3	23	Higher
	Bowling Green as a place to visit	73%	6	17	Similar
	Bowling Green as a place to work	78%	5	29	Higher
Recreation and Wellness	Health and wellness opportunities in Bowling Green	74%	10	15	Similar
	Availability of affordable quality mental health care	61%	3	13	Higher
	Availability of preventive health services	74%	8	16	Similar
	Availability of affordable quality health care	71%	8	18	Similar
	Availability of affordable quality food	82%	3	17	Similar
	Recreational opportunities	72%	10	19	Similar
	Fitness opportunities (including exercise classes and paths or trails, etc.)	81%	2	14	Similar
Education and Enrichment	Overall opportunities for education and enrichment	82%	7	15	Similar
	Opportunities to participate in religious or spiritual events and activities	88%	2	15	Similar
	Opportunities to attend cultural/arts/music activities	73%	6	21	Similar
	Adult educational opportunities	81%	1	14	Higher
	K-12 education	87%	4	19	Higher
	Availability of affordable quality child care/preschool	57%	6	18	Similar
Community Engagement	Opportunities to participate in social events and activities	68%	9	18	Similar
	Neighborliness of Bowling Green	60%	8	15	Similar
	Openness and acceptance of the community toward people of diverse backgrounds	62%	15	23	Similar
	Opportunities to participate in community matters	70%	8	20	Similar
	Opportunities to volunteer	81%	5	19	Similar

Table 75: Governance General

	Percent positive	Rank	Number of communities in comparison	Comparison to benchmark
Services provided by the City of Bowling Green	77%	17	29	Similar
Overall customer service by Bowling Green employees (police, receptionists, planners, etc.)	71%	17	30	Similar
Value of services for the taxes paid to Bowling Green	50%	22	32	Similar
Overall direction that Bowling Green is taking	60%	13	23	Similar
Job Bowling Green government does at welcoming citizen involvement	56%	12	21	Similar
Overall confidence in Bowling Green government	52%	10	14	Similar
Generally acting in the best interest of the community	62%	9	14	Similar
Being honest	55%	11	14	Similar
Treating all residents fairly	54%	11	14	Similar
Services provided by the Federal Government	40%	10	17	Similar

The National Citizen Survey™

Table 76: Governance by Facet

		Percent positive	Rank	Number of communities in comparison	Comparison to benchmark
Safety	Police Department services	80%	18	35	Similar
	Fire Department services	96%	9	31	Similar
	Ambulance or emergency medical services	92%	11	25	Similar
	Crime prevention	75%	10	30	Similar
	Fire prevention and education	83%	11	22	Similar
	Animal control	65%	13	20	Similar
	Emergency preparedness (services that prepare the community for natural disasters or other emergency situations)	79%	9	22	Similar
Mobility	Traffic enforcement	62%	17	27	Similar
	Street repair	48%	14	24	Similar
	Street cleaning	62%	8	21	Similar
	Street lighting	73%	2	27	Higher
	Snow removal	70%	1	9	Similar
	Sidewalk maintenance	57%	10	23	Similar
	Traffic signal timing	49%	13	19	Similar
Natural Environment	Bus or transit services	45%	13	16	Similar
	Garbage collection	89%	11	32	Similar
	Recycling	79%	16	32	Similar
	Yard waste pick-up	69%	18	27	Similar
	Drinking water	78%	7	26	Similar
Built Environment	Preservation of natural areas such as open space, farmlands and greenbelts	56%	13	17	Similar
	Bowling Green open space	59%	8	11	Similar
Economy	Storm drainage	65%	12	27	Similar
	Power (electric and/or gas) utility	80%	5	15	Similar
	Utility billing	65%	11	16	Similar
	Land use, planning and zoning	54%	13	18	Similar
	Code enforcement (weeds, abandoned buildings, etc.)	46%	18	32	Similar
Recreation and Wellness	Economic development	74%	4	21	Higher
	City parks	87%	9	24	Similar
	Recreation programs or classes	79%	11	24	Similar
	Recreation centers or facilities	84%	8	24	Similar
	Health services	81%	6	14	Similar
Education and Enrichment	City-sponsored special events	68%	14	20	Similar
	Public library services	93%	10	27	Similar
Community Engagement	Public information services	79%	7	25	Similar

Table 77: Participation General

	Percent positive	Rank	Number of communities in comparison	Comparison to benchmark
Sense of community	63%	10	21	Similar
Recommend living in Bowling Green to someone who asks	90%	10	20	Similar
Remain in Bowling Green for the next five years	82%	11	19	Similar
Contacted Bowling Green (in-person, phone, email or web) for help or information	33%	24	25	Lower

The National Citizen Survey™

Table 78: Participation by Facet

		Percent positive	Rank	Number of communities in comparison	Comparison to benchmark
Safety	Stocked supplies in preparation for an emergency	31%	11	14	Lower
	Did NOT report a crime to the police	76%	10	14	Similar
	Household member was NOT a victim of a crime	88%	12	18	Similar
Mobility	Used bus, rail, subway or other public transportation instead of driving	6%	10	12	Lower
	Carpooled with other adults or children instead of driving alone	43%	5	14	Similar
	Walked or biked instead of driving	41%	10	14	Similar
Natural Environment	Made efforts to conserve water	70%	14	14	Lower
	Made efforts to make your home more energy efficient	76%	3	14	Similar
	Recycle at home	73%	17	19	Lower
Built Environment	Did NOT observe a code violation or other hazard in Bowling Green	53%	7	14	Similar
	NOT experiencing housing costs stress	74%	4	20	Similar
Economy	Purchase goods or services from a business located in Bowling Green	96%	11	14	Similar
	Economy will have positive impact on income	42%	4	19	Higher
	Work inside boundaries of Bowling Green	68%	1	14	Higher
Recreation and Wellness	Used Bowling Green recreation centers or their services	54%	14	20	Similar
	Visited a neighborhood park or City park	85%	13	21	Similar
	Eat at least 5 portions of fruits and vegetables a day	85%	5	13	Similar
	Participate in moderate or vigorous physical activity	80%	11	14	Similar
	In very good to excellent health	57%	11	14	Similar
	Used Bowling Green public libraries or their services	55%	13	16	Similar
Education and Enrichment	Participated in religious or spiritual activities in Bowling Green	60%	8	15	Similar
	Attended City-sponsored event	52%	10	14	Similar
	Campaigned or advocated for an issue, cause or candidate	33%	1	13	Similar
Community Engagement	Contacted Bowling Green elected officials (in-person, phone, email or web) to express your opinion	24%	3	14	Similar
	Volunteered your time to some group/activity in Bowling Green	52%	6	19	Similar
	Participated in a club	36%	4	18	Similar
	Talked to or visited with your immediate neighbors	86%	11	14	Similar
	Done a favor for a neighbor	72%	13	14	Similar
	Attended a local public meeting	23%	7	19	Similar
	Watched (online or on television) a local public meeting	31%	5	17	Similar
	Read or watch local news (via television, paper, computer, etc.)	81%	11	14	Similar
	Vote in local elections	71%	13	18	Similar

The National Citizen Survey™

Communities included in custom community comparisons

The communities included in Bowling Green’s custom comparisons are listed below along with their population according to the 2010 Census.

Annapolis city, MD	38,394	Johnson City city, TN.....	63,152
Auburn city, AL	53,380	Jupiter town, FL.....	55,156
Bedford city, TX	46,979	Manassas city, VA	37,821
Bowling Green city, KY	58,067	Missouri City city, TX.....	67,358
Brentwood city, TN	37,060	New Braunfels city, TX	57,740
Burleson city, TX.....	36,690	North Port city, FL.....	57,357
Cedar Hill city, TX	45,028	North Richland Hills city, TX.....	63,343
Chapel Hill town, NC	57,233	Palm Beach Gardens city, FL.....	48,452
Charlottesville city, VA.....	43,475	Pflugerville city, TX	46,936
Delray Beach city, FL.....	60,522	Port Orange city, FL	56,048
Dothan city, AL	65,496	Reston CDP, VA	58,404
Flower Mound town, TX.....	64,669	Rock Hill city, SC.....	66,154
Franklin city, TN.....	62,487	Rockville city, MD.....	61,209
Friendswood city, TX.....	35,805	San Marcos city, TX.....	44,894
Gaithersburg city, MD.....	59,933	Sanford city, FL.....	53,570
Galveston city, TX	47,743	St. Cloud city, FL.....	35,183
Georgetown city, TX.....	47,400	Tamarac city, FL	60,427
Germantown city, TN	38,844	Temple city, TX.....	66,102
Haltom City city, TX	42,409	Texarkana city, TX	36,411
Harrisonburg city, VA	48,914	York County, VA.....	65,464
Hurst city, TX.....	37,337		
James City County, VA	67,009		

Appendix C: Detailed Survey Methods

The National Citizen Survey (The NCS™), conducted by National Research Center, Inc., was developed to provide communities an accurate, affordable and easy way to assess and interpret resident opinion about important local topics. Standardization of common questions and survey methods provide the rigor to assure valid results, and each community has enough flexibility to construct a customized version of The NCS.

Results offer insight into residents' perspectives about the community as a whole, including local amenities, services, public trust, resident participation and other aspects of the community in order to support budgeting, land use and strategic planning and communication with residents. Resident demographic characteristics permit comparison to the Census as well as comparison of results for different subgroups of residents. The City of Bowling Green funded this research. Please contact Kim Lancaster of the City of Bowling Green at Kim.Lancaster@bgky.org if you have any questions about the survey.

Survey Validity

The question of survey validity has two parts: 1) how can a community be confident that the results from those who completed the questionnaire are representative of the results that would have been obtained had the survey been administered to the entire population? and 2) how closely do the perspectives recorded on the survey reflect what residents really believe or do?

To answer the first question, the best survey research practices were used for the resources spent to ensure that the results from the survey respondents reflect the opinions of residents in the entire community. These practices include:

- Using a mail-out/mail-back methodology, which typically gets a higher response rate than phone for the same dollars spent. A higher response rate lessens the worry that those who did not respond are different than those who did respond.
- Selecting households at random within the community to receive the survey to ensure that the households selected to receive the survey are representative of the larger community.
- Over-sampling multi-family housing units to improve response from hard-to-reach, lower income or younger apartment dwellers.
- Selecting the respondent within the household using an unbiased sampling procedure; in this case, the "birthday method." The cover letter included an instruction requesting that the respondent in the household be the adult (18 years old or older) who most recently had a birthday, irrespective of year of birth.
- Contacting potential respondents three times to encourage response from people who may have different opinions or habits than those who would respond with only a single prompt.
- Inviting response in a compelling manner (using appropriate letterhead/logos and a signature of a visible leader) to appeal to recipients' sense of civic responsibility.
- Providing a pre-addressed, postage-paid return envelope.
- Offering the survey in Spanish or other language when requested by a given community.
- Weighting the results to reflect the demographics of the population.

The answer to the second question about how closely the perspectives recorded on the survey reflect what residents really believe or do is more complex. Resident responses to surveys are influenced by a variety of factors. For questions about service quality, residents' expectations for service quality play a role as well as the "objective" quality of the service provided, the way the resident perceives the entire community (that is, the context in which the service is provided), the scale on which the resident is asked to record his or her opinion and, of course, the opinion, itself, that a resident holds about the service. Similarly a resident's report of certain behaviors is colored by what he or she believes is the socially desirable response (e.g., reporting tolerant behaviors toward "oppressed groups," likelihood of voting for a tax increase for services to poor people, use of alternative modes of travel to work besides the single occupancy vehicle), his or her memory of the actual behavior (if it is not a question speculating about future actions, like a vote), his or her confidence that he or she can be honest without suffering any negative consequences (thus the need for anonymity) as well as the actual behavior itself.

How closely survey results come to recording the way a person really feels or behaves often is measured by the coincidence of reported behavior with observed current behavior (e.g., driving habits), reported intentions to behave with observed future behavior (e.g., voting choices) or reported opinions about current community quality

with objective characteristics of the community (e.g., feelings of safety correlated with rates of crime). There is a body of scientific literature that has investigated the relationship between reported behaviors and actual behaviors. Well-conducted surveys, by and large, do capture true respondent behaviors or intentions to act with great accuracy. Predictions of voting outcomes tend to be quite accurate using survey research, as do reported behaviors that are not about highly sensitive issues (e.g., family abuse or other illegal or morally sanctioned activities). For self-reports about highly sensitive issues, statistical adjustments can be made to correct for the respondents' tendency to report what they think the "correct" response should be.

Research on the correlation of resident opinion about service quality and "objective" ratings of service quality vary, with some showing stronger relationships than others. NRC's own research has demonstrated that residents who report the lowest ratings of street repair live in communities with objectively worse street conditions than those who report high ratings of street repair (based on road quality, delay in street repair, number of road repair employees). Similarly, the lowest rated fire services appear to be "objectively" worse than the highest rated fire services (expenditures per capita, response time, "professional" status of firefighters, breadth of services and training provided). Resident opinion commonly reflects objective performance data but is an important measure on its own. NRC principals have written, "If you collect trash three times a day but residents think that your trash haul is lousy, you still have a problem."

Selecting Survey Recipients

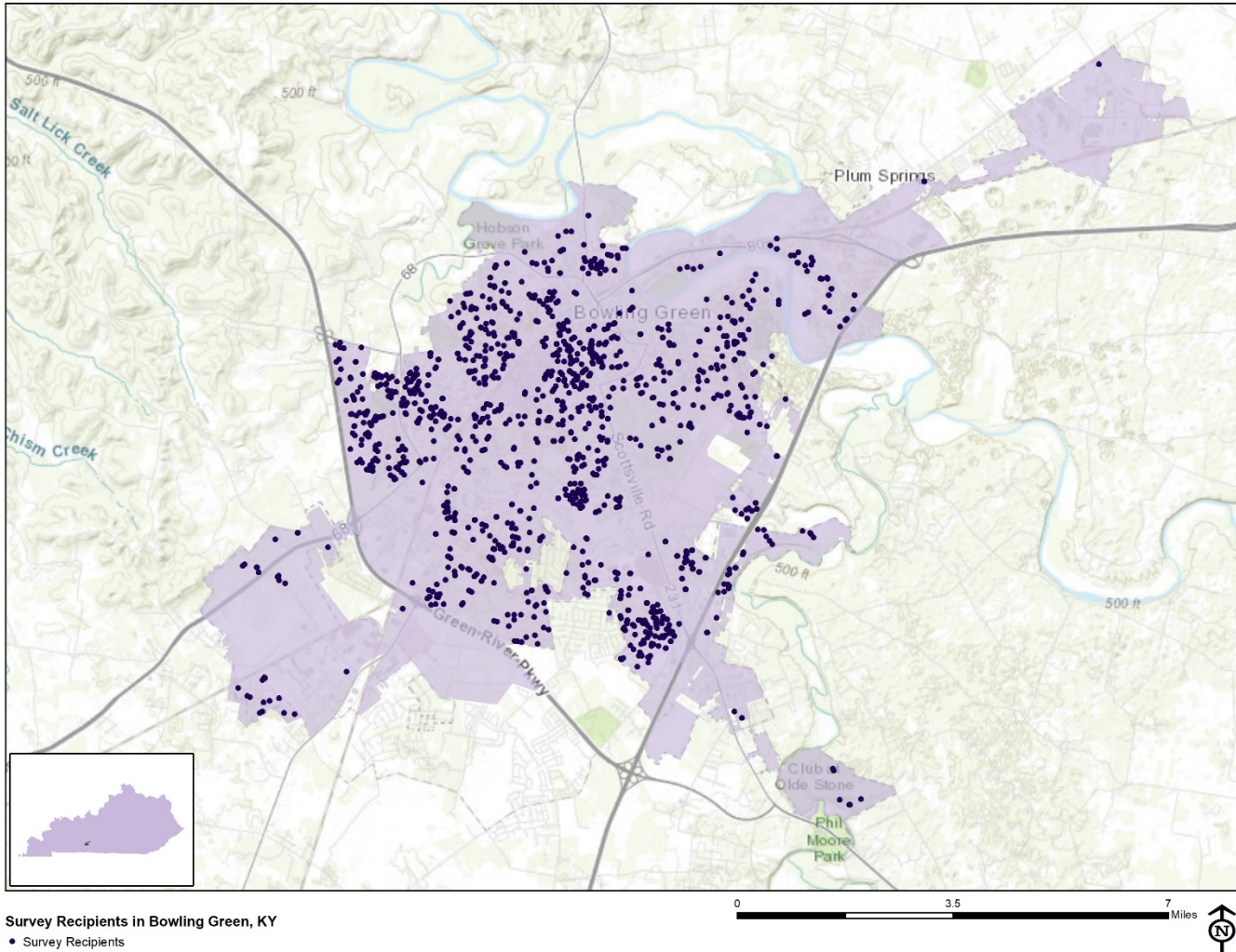
"Sampling" refers to the method by which households were chosen to receive the survey. All households within the City of Bowling Green were eligible to participate in the survey. A list of all households within the zip codes serving Bowling Green was purchased from Go-Dog Direct based on updated listings from the United States Postal Service. Since some of the zip codes that serve the City of Bowling Green households may also serve addresses that lie outside of the community, the exact geographic location of each housing unit was compared to community boundaries using the most current municipal boundary file (updated on a quarterly basis) and addresses located outside of the City of Bowling Green boundaries were removed from consideration.

To choose the 1,800 survey recipients, a systematic sampling method was applied to the list of households previously screened for geographic location. Systematic sampling is a procedure whereby a complete list of all possible households is culled, selecting every *N*th one, giving each eligible household a known probability of selection, until the appropriate number of households is selected. Multi-family housing units were selected at a higher rate as residents of this type of housing typically respond at lower rates to surveys than do those in single-family housing units. Figure 1 displays a map of the households selected to receive the survey. In general, because of the random sampling techniques used, the displayed sampling density will closely mirror the overall housing unit density (which may be different from the population density). While the theory of probability assumes no bias in selection, there may be some minor variations in practice (meaning, an area with only 15% of the housing units might be selected at an actual rate that is slightly above or below that).

An individual within each household was selected using the birthday method. The birthday method selects a person within the household by asking the "person whose birthday has most recently passed" to complete the questionnaire. The underlying assumption in this method is that day of birth has no relationship to the way people respond to surveys. This instruction was contained in the cover letter accompanying the questionnaire.

In addition to the scientific, random selection of households, a link to an online "opt-in" survey was publicized and posted to the City of Bowling Green website. This opt-in survey was identical to the scientific survey and open to all City residents. (The data presented in this report exclude the opt-in survey data. These data can be found in the *Supplemental Online Survey Results* provided under separate cover.)

Figure 1: Location of Survey Recipients



Survey Administration and Response

Selected households received three mailings, one week apart, beginning on March 26, 2018. The first mailing was a prenotification postcard announcing the upcoming survey with a link to take the survey online. The next mailing contained a letter from the Interim City Manager inviting the household to participate, a questionnaire and a postage-paid return envelope. The final mailing contained a reminder postcard encouraging residents to take the survey online. The survey was available in English. The City of Bowling Green chose to augment their administration of The NCS with custom benchmark comparisons. The results of this additional service have been provided under separate cover. Completed surveys were collected via mail and online over the following seven weeks. The online “opt-in” survey became available to all residents on April 30, 2018 and remained open for two weeks.

About 8% of the 1,800 surveys mailed were returned because the housing unit was vacant or the postal service was unable to deliver the survey as addressed. Of the remaining 1,665, 283 households completed the survey, providing an overall response rate of 17%. Of the 283 completed surveys, 142 were completed online. The response rate was calculated using AAPOR’s response rate #2¹ for mailed surveys of unnamed persons. Additionally, 181 residents completed the online opt-in survey; results of the opt-in survey can be found in the *Supplemental Online Survey Results* report provided under separate cover.

¹ See AAPOR’s Standard Definitions here: [http://www.aapor.org/Standards-Ethics/Standard-Definitions-\(1\).aspx](http://www.aapor.org/Standards-Ethics/Standard-Definitions-(1).aspx) for more information

Table 79: Survey Response Rate

	Overall
Total sample used	1,800
I=Complete Interviews	266
P=Partial Interviews	17
R=Refusal and break off	1
NC=Non Contact	0
O=Other	0
UH=Unknown household	0
UO=Unknown other	1,381
Response rate: $(I+P)/(I+P) + (R+NC+O) + (UH+UO)$	17%

Confidence Intervals

It is customary to describe the precision of estimates made from surveys by a “level of confidence” and accompanying “confidence interval” (or margin of error). A traditional level of confidence, and the one used here, is 95%. The 95% confidence interval can be any size and quantifies the sampling error or imprecision of the survey results because some residents’ opinions are relied on to estimate all residents’ opinions.²

The margin of error for the City of Bowling Green survey is no greater than plus or minus six percentage points around any given percent reported for all respondents (283 completed surveys).

For subgroups of responses, the margin of error increases because the number of respondents for the subgroup is smaller. For subgroups of approximately 100 respondents, the margin of error is plus or minus 10 percentage points.

Survey Processing (Data Entry)

Upon receipt, completed surveys were assigned a unique identification number. Additionally, each survey was reviewed and “cleaned” as necessary. For example, a question may have asked a respondent to pick two items out of a list of five, but the respondent checked three; in this case, NRC would use protocols to randomly choose two of the three selected items for inclusion in the dataset.

All surveys then were entered twice into an electronic dataset; any discrepancies were resolved in comparison to the original survey form. Range checks as well as other forms of quality control were also performed.

NRC used SurveyGizmo, a web-based survey and analytics platform, to collect the online survey data. Use of an online system means all collected data are entered into the dataset when the respondents submit the surveys. Skip patterns are programmed into system so respondents are automatically “skipped” to the appropriate question based on the individual responses being given. Online programming also allows for more rigid control of the data format, making extensive data cleaning unnecessary.

A series of quality control checks were also performed in order to ensure the integrity of the web data. Steps may include and not be limited to reviewing the data for clusters of repeat IP addresses and time stamps (indicating duplicate responses) and removing empty submissions (questionnaires submitted with no questions answered).

Survey Data Weighting

The demographic characteristics of the survey respondents were compared to those found in the 2010 Census and American Community Survey estimates for adults in the City of Bowling Green. The primary objective of weighting survey data is to make the survey respondents reflective of the larger population of the community. The characteristics used for weighting were housing tenure (rent or own), housing unit type (attached or detached),

² A 95% confidence interval indicates that for every 100 random samples of this many residents, 95 of the confidence intervals created will include the “true” population response. This theory is applied in practice to mean that the “true” perspective of the target population lies within the confidence interval created for a single survey. For example, if 75% of residents rate a service as “excellent” or “good,” then the 4% margin of error (for the 95% confidence interval) indicates that the range of likely responses for the entire community is between 71% and 79%. This source of uncertainty is called sampling error. In addition to sampling error, other sources of error may affect any survey, including the non-response of residents with opinions different from survey responders. Though standardized on The NCS, on other surveys, differences in question wording, order, translation and data entry, as examples, can lead to somewhat varying results.

race and ethnicity, sex and age. No adjustments were made for design effects. The results of the weighting scheme are presented in the following table.

Table 80: Bowling Green, KY 2018 Weighting Table

Characteristic	2010 Census	Unweighted Data	Weighted Data
Housing			
Rent home	59%	35%	55%
Own home	41%	65%	45%
Detached unit*	55%	64%	55%
Attached unit*	45%	36%	45%
Race and Ethnicity			
White	79%	88%	79%
Not white	21%	12%	21%
Not Hispanic	95%	98%	95%
Hispanic	5%	2%	5%
Sex and Age			
Female	52%	62%	54%
Male	48%	38%	46%
18-34 years of age	45%	15%	41%
35-54 years of age	29%	25%	30%
55+ years of age	26%	60%	29%
Females 18-34	23%	9%	22%
Females 35-54	15%	16%	16%
Females 55+	15%	37%	16%
Males 18-34	23%	5%	19%
Males 35-54	14%	7%	13%
Males 55+	11%	26%	13%

* American Community Survey 2011 5-year estimates

Survey Data Analysis and Reporting

The survey dataset was analyzed using the Statistical Package for the Social Sciences (SPSS). For the most part, the percentages presented in the reports represent the “percent positive.” The percent positive is the combination of the top two most positive response options (i.e., “excellent” and “good,” “very safe” and “somewhat safe,” “essential” and “very important,” etc.), or, in the case of resident behaviors/participation, the percent positive represents the proportion of respondents indicating “yes” or participating in an activity at least once a month.

On many of the questions in the survey respondents may answer “don’t know.” The proportion of respondents giving this reply is shown in the full set of responses included in Appendix A. However, these responses have been removed from the analyses presented in the reports. In other words, the tables and graphs display the responses from respondents who had an opinion about a specific item. When a table for a question that only permitted a single response does not total to exactly 100%, it is due to the common practice of percentages being rounded to the nearest whole number.

The data for the opt-in survey are presented separately in the report titled *Supplemental Online Survey Results*.

Appendix D: Survey Materials

Dear Bowling Green Resident,

It won't take much of your time to make a big difference!

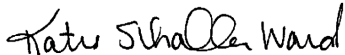
Your household has been randomly selected to participate in a survey about your community.

Please complete the survey online at:

bit.ly/bowlinggreen2018

Thank you for helping create a better City!

Sincerely,



Katie Schaller-Ward
Interim City Manager

Dear Bowling Green Resident,

It won't take much of your time to make a big difference!


Your household has been randomly selected to participate in a survey about your community.

Please complete the survey online at:

bit.ly/bowlinggreen2018

Thank you for helping create a better City!

Sincerely,



Katie Schaller-Ward
Interim City Manager

Dear Bowling Green Resident,

It won't take much of your time to make a big difference!

Your household has been randomly selected to participate in a survey about your community.

Please complete the survey online at:

bit.ly/bowlinggreen2018

Thank you for helping create a better City!

Sincerely,



Katie Schaller-Ward
Interim City Manager

Dear Bowling Green Resident,

It won't take much of your time to make a big difference!

Your household has been randomly selected to participate in a survey about your community.

Please complete the survey online at:

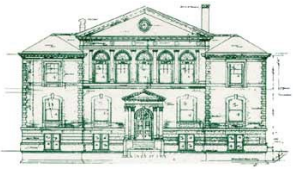
bit.ly/bowlinggreen2018

Thank you for helping create a better City!

Sincerely,

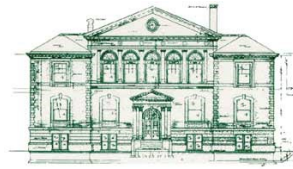


Katie Schaller-Ward
Interim City Manager



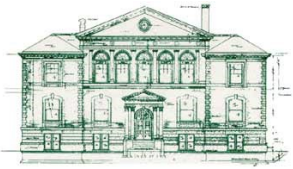
CITY OF BOWLING GREEN
1001 COLLEGE STREET
BOWLING GREEN • KY • 42102-0430

Presorted
First Class Mail
US Postage
PAID
Boulder, CO
Permit NO. 94



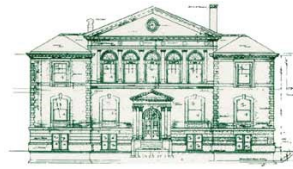
CITY OF BOWLING GREEN
1001 COLLEGE STREET
BOWLING GREEN • KY • 42102-0430

Presorted
First Class Mail
US Postage
PAID
Boulder, CO
Permit NO. 94



CITY OF BOWLING GREEN
1001 COLLEGE STREET
BOWLING GREEN • KY • 42102-0430

Presorted
First Class Mail
US Postage
PAID
Boulder, CO
Permit NO. 94



CITY OF BOWLING GREEN
1001 COLLEGE STREET
BOWLING GREEN • KY • 42102-0430

Presorted
First Class Mail
US Postage
PAID
Boulder, CO
Permit NO. 94

Dear Bowling Green Resident,

Just a reminder – if you have not yet completed Bowling Green's 2018 Community Survey, please do so.

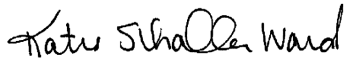
Your participation in this survey is very important – your answers will help the Bowling Green Board of Commissioners make decisions that affect your community.

Please complete the survey online at:

bit.ly/bowlinggreen2018

Thank you very much!

Sincerely,



Katie Schaller-Ward
Interim City Manager

Dear Bowling Green Resident,

Just a reminder – if you have not yet completed Bowling Green's 2018 Community Survey, please do so.

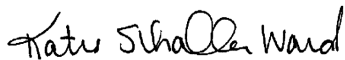
Your participation in this survey is very important – your answers will help the Bowling Green Board of Commissioners make decisions that affect your community.

Please complete the survey online at:

bit.ly/bowlinggreen2018

Thank you very much!

Sincerely,



Katie Schaller-Ward
Interim City Manager

Dear Bowling Green Resident,

Just a reminder – if you have not yet completed Bowling Green's 2018 Community Survey, please do so.

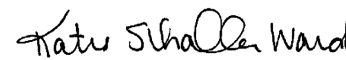
Your participation in this survey is very important – your answers will help the Bowling Green Board of Commissioners make decisions that affect your community.

Please complete the survey online at:

bit.ly/bowlinggreen2018

Thank you very much!

Sincerely,



Katie Schaller-Ward
Interim City Manager

Dear Bowling Green Resident,

Just a reminder – if you have not yet completed Bowling Green's 2018 Community Survey, please do so.

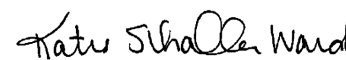
Your participation in this survey is very important – your answers will help the Bowling Green Board of Commissioners make decisions that affect your community.

Please complete the survey online at:

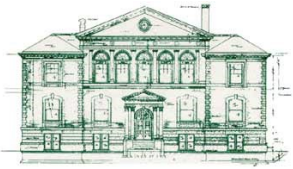
bit.ly/bowlinggreen2018

Thank you very much!

Sincerely,



Katie Schaller-Ward
Interim City Manager



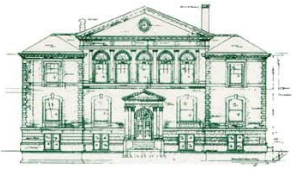
CITY OF BOWLING GREEN
 1001 COLLEGE STREET
 BOWLING GREEN • KY • 42102-0430

Presorted
 First Class Mail
 US Postage
 PAID
 Boulder, CO
 Permit NO. 94



CITY OF BOWLING GREEN
 1001 COLLEGE STREET
 BOWLING GREEN • KY • 42102-0430

Presorted
 First Class Mail
 US Postage
 PAID
 Boulder, CO
 Permit NO. 94



CITY OF BOWLING GREEN
 1001 COLLEGE STREET
 BOWLING GREEN • KY • 42102-0430

Presorted
 First Class Mail
 US Postage
 PAID
 Boulder, CO
 Permit NO. 94



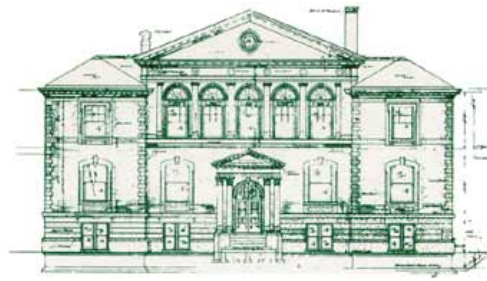
CITY OF BOWLING GREEN
 1001 COLLEGE STREET
 BOWLING GREEN • KY • 42102-0430

Presorted
 First Class Mail
 US Postage
 PAID
 Boulder, CO
 Permit NO. 94

DEBORAH JENKINS, CFE, CGAP, CICA
Internal Auditor

KIM LANCASTER
*Executive Assistant/
Public Information Officer*

LAURA HARRIS
*Graphic Designer/
Broadcasting Coordinator*



KATIE SCHALLER-WARD, CKMC
Assistant City Manager/City Clerk

ASHLEY JACKSON, CMC, CKMC
Assistant City Clerk

MARILYN PARRIGIN
Procurement Manager

JENNIFER EDWARDS
Records Management Coordinator

KATIE SCHALLER-WARD
Interim City Manager

CITY OF BOWLING GREEN

F O U N D E D 1 7 9 8

April 2018

Dear City of Bowling Green Resident:

Please help us shape the future of Bowling Green! You have been selected at random to participate in the 2018 Bowling Green Citizen Survey.

Your participation in this survey is very important – especially since your household is one of only a small number of households being surveyed. Your feedback will help Bowling Green make decisions that affect our City.

A few things to remember:

- **Your responses are completely anonymous.**
- In order to hear from a diverse group of residents, the adult 18 years or older in your household who most recently had a birthday should complete this survey.
- **Please complete the survey online at:**

bit.ly/bowlinggreen2018

If you have any questions about the survey please call 270-393-3642.

Thank you for your time and participation!

Sincerely,

Katie Schaller-Ward
Interim City Manager

The City of Bowling Green 2018 Citizen Survey

Please complete this questionnaire if you are the adult (age 18 or older) in the household who most recently had a birthday. The adult's year of birth does not matter. Please select the response (by circling the number or checking the box) that most closely represents your opinion for each question. Your responses are anonymous and will be reported in group form only.

1. Please rate each of the following aspects of quality of life in Bowling Green:

	<i>Excellent</i>	<i>Good</i>	<i>Fair</i>	<i>Poor</i>	<i>Don't know</i>
Bowling Green as a place to live.....	1	2	3	4	5
Your neighborhood as a place to live.....	1	2	3	4	5
Bowling Green as a place to raise children	1	2	3	4	5
Bowling Green as a place to work.....	1	2	3	4	5
Bowling Green as a place to visit	1	2	3	4	5
Bowling Green as a place to retire	1	2	3	4	5
The overall quality of life in Bowling Green.....	1	2	3	4	5

2. Please rate each of the following characteristics as they relate to Bowling Green as a whole:

	<i>Excellent</i>	<i>Good</i>	<i>Fair</i>	<i>Poor</i>	<i>Don't know</i>
Overall feeling of safety in Bowling Green	1	2	3	4	5
Overall ease of getting to the places you usually have to visit.....	1	2	3	4	5
Quality of overall natural environment in Bowling Green	1	2	3	4	5
Overall "built environment" of Bowling Green (including overall design, buildings, parks and transportation systems)	1	2	3	4	5
Health and wellness opportunities in Bowling Green	1	2	3	4	5
Overall opportunities for education and enrichment.....	1	2	3	4	5
Overall economic health of Bowling Green.....	1	2	3	4	5
Sense of community.....	1	2	3	4	5
Overall image or reputation of Bowling Green	1	2	3	4	5

3. Please indicate how likely or unlikely you are to do each of the following:

	<i>Very likely</i>	<i>Somewhat likely</i>	<i>Somewhat unlikely</i>	<i>Very unlikely</i>	<i>Don't know</i>
Recommend living in Bowling Green to someone who asks	1	2	3	4	5
Remain in Bowling Green for the next five years.....	1	2	3	4	5

4. Please rate how safe or unsafe you feel:

	<i>Very safe</i>	<i>Somewhat safe</i>	<i>Neither safe nor unsafe</i>	<i>Somewhat unsafe</i>	<i>Very unsafe</i>	<i>Don't know</i>
In your neighborhood during the day.....	1	2	3	4	5	6
In Bowling Green's downtown/commercial area during the day	1	2	3	4	5	6

5. Please rate each of the following characteristics as they relate to Bowling Green as a whole:

	<i>Excellent</i>	<i>Good</i>	<i>Fair</i>	<i>Poor</i>	<i>Don't know</i>
Traffic flow on major streets	1	2	3	4	5
Ease of public parking.....	1	2	3	4	5
Ease of travel by car in Bowling Green.....	1	2	3	4	5
Ease of travel by public transportation in Bowling Green	1	2	3	4	5
Ease of travel by bicycle in Bowling Green.....	1	2	3	4	5
Ease of walking in Bowling Green	1	2	3	4	5
Availability of paths and walking trails	1	2	3	4	5
Air quality	1	2	3	4	5
Cleanliness of Bowling Green	1	2	3	4	5
Overall appearance of Bowling Green	1	2	3	4	5
Public places where people want to spend time	1	2	3	4	5
Variety of housing options	1	2	3	4	5
Availability of affordable quality housing	1	2	3	4	5
Fitness opportunities (including exercise classes and paths or trails, etc.)	1	2	3	4	5
Recreational opportunities.....	1	2	3	4	5
Availability of affordable quality food.....	1	2	3	4	5
Availability of affordable quality health care	1	2	3	4	5
Availability of preventive health services	1	2	3	4	5
Availability of affordable quality mental health care	1	2	3	4	5

6. Please rate each of the following characteristics as they relate to Bowling Green as a whole:

	<i>Excellent</i>	<i>Good</i>	<i>Fair</i>	<i>Poor</i>	<i>Don't know</i>
Availability of affordable quality child care/preschool	1	2	3	4	5
K-12 education	1	2	3	4	5
Adult educational opportunities	1	2	3	4	5
Opportunities to attend cultural/arts/music activities	1	2	3	4	5
Opportunities to participate in religious or spiritual events and activities	1	2	3	4	5
Employment opportunities	1	2	3	4	5
Shopping opportunities	1	2	3	4	5
Cost of living in Bowling Green	1	2	3	4	5
Overall quality of business and service establishments in Bowling Green	1	2	3	4	5
Vibrant downtown/commercial area	1	2	3	4	5
Overall quality of new development in Bowling Green	1	2	3	4	5
Opportunities to participate in social events and activities	1	2	3	4	5
Opportunities to volunteer	1	2	3	4	5
Opportunities to participate in community matters	1	2	3	4	5
Openness and acceptance of the community toward people of diverse backgrounds	1	2	3	4	5
Neighborliness of residents in Bowling Green	1	2	3	4	5

7. Please indicate whether or not you have done each of the following in the last 12 months.

	<i>No</i>	<i>Yes</i>
Made efforts to conserve water	1	2
Made efforts to make your home more energy efficient	1	2
Observed a code violation or other hazard in Bowling Green (weeds, abandoned buildings, etc.)	1	2
Household member was a victim of a crime in Bowling Green	1	2
Reported a crime to the police in Bowling Green	1	2
Stocked supplies in preparation for an emergency	1	2
Campaigned or advocated for an issue, cause or candidate	1	2
Contacted the City of Bowling Green (in-person, phone, email or web) for help or information	1	2
Contacted Bowling Green elected officials (in-person, phone, email or web) to express your opinion	1	2

8. In the last 12 months, about how many times, if at all, have you or other household members done each of the following in Bowling Green?

	<i>2 times a week or more</i>	<i>2-4 times a month</i>	<i>Once a month or less</i>	<i>Not at all</i>
Used Bowling Green recreation centers or their services	1	2	3	4
Visited a neighborhood park or City park	1	2	3	4
Used Bowling Green public libraries or their services	1	2	3	4
Participated in religious or spiritual activities in Bowling Green	1	2	3	4
Attended a City-sponsored event	1	2	3	4
Used bus, rail, subway or other public transportation instead of driving	1	2	3	4
Carpooled with other adults or children instead of driving alone	1	2	3	4
Walked or biked instead of driving	1	2	3	4
Volunteered your time to some group/activity in Bowling Green	1	2	3	4
Participated in a club	1	2	3	4
Talked to or visited with your immediate neighbors	1	2	3	4
Done a favor for a neighbor	1	2	3	4

9. Thinking about local public meetings (of local elected officials like the City of Bowling Green Board of Commissioners or Warren County Fiscal Court, advisory boards, town halls, HOA, neighborhood watch, etc.), in the last 12 months, about how many times, if at all, have you or other household members attended or watched a local public meeting?

	<i>2 times a week or more</i>	<i>2-4 times a month</i>	<i>Once a month or less</i>	<i>Not at all</i>
<u>Attended</u> a local public meeting	1	2	3	4
<u>Watched</u> (online or on television) a local public meeting	1	2	3	4

The City of Bowling Green 2018 Citizen Survey

10. Please rate the quality of each of the following services in Bowling Green:

	<i>Excellent</i>	<i>Good</i>	<i>Fair</i>	<i>Poor</i>	<i>Don't know</i>
Bowling Green Police Department Services	1	2	3	4	5
Bowling Green Fire Department Services	1	2	3	4	5
Ambulance or emergency medical services	1	2	3	4	5
Crime prevention.....	1	2	3	4	5
Fire prevention and education.....	1	2	3	4	5
Traffic enforcement	1	2	3	4	5
Street repair	1	2	3	4	5
Street cleaning	1	2	3	4	5
Street lighting.....	1	2	3	4	5
Snow removal	1	2	3	4	5
Sidewalk maintenance	1	2	3	4	5
Traffic signal timing.....	1	2	3	4	5
Bus or transit services.....	1	2	3	4	5
Garbage collection	1	2	3	4	5
Recycling	1	2	3	4	5
Yard waste pick-up	1	2	3	4	5
Storm drainage	1	2	3	4	5
Drinking water.....	1	2	3	4	5
Power (electric and/or gas) utility	1	2	3	4	5
Utility billing	1	2	3	4	5
City parks.....	1	2	3	4	5
Recreation programs or classes.....	1	2	3	4	5
Recreation centers or facilities	1	2	3	4	5
Land use, planning and zoning.....	1	2	3	4	5
Code enforcement (weeds, abandoned buildings, etc.)	1	2	3	4	5
Animal control	1	2	3	4	5
Economic development	1	2	3	4	5
Health services	1	2	3	4	5
Public library services	1	2	3	4	5
Public information services	1	2	3	4	5
Bowling Green TV Channel 4.....	1	2	3	4	5
Emergency preparedness (services that prepare the community for natural disasters or other emergency situations).....	1	2	3	4	5
Preservation of natural areas such as open space, farmlands and greenbelts.....	1	2	3	4	5
Bowling Green open space	1	2	3	4	5
City-sponsored special events	1	2	3	4	5
Overall customer service by Bowling Green employees (police, receptionists, planners, etc.).....	1	2	3	4	5
City of Bowling Green website	1	2	3	4	5

11. Overall, how would you rate the quality of the services provided by each of the following?

	<i>Excellent</i>	<i>Good</i>	<i>Fair</i>	<i>Poor</i>	<i>Don't know</i>
The City of Bowling Green.....	1	2	3	4	5
The Federal Government	1	2	3	4	5

12. Please rate the following categories of Bowling Green government performance:

	<i>Excellent</i>	<i>Good</i>	<i>Fair</i>	<i>Poor</i>	<i>Don't know</i>
The value of services for the taxes paid to Bowling Green	1	2	3	4	5
The overall direction that Bowling Green is taking	1	2	3	4	5
The job Bowling Green government does at welcoming citizen involvement ...	1	2	3	4	5
Overall confidence in Bowling Green government.....	1	2	3	4	5
Generally acting in the best interest of the community	1	2	3	4	5
Being honest.....	1	2	3	4	5
Treating all residents fairly	1	2	3	4	5

13. Please rate how important, if at all, you think it is for the Bowling Green community to focus on each of the following in the coming two years:

	<i>Essential</i>	<i>Very important</i>	<i>Somewhat important</i>	<i>Not at all important</i>
Overall feeling of safety in Bowling Green	1	2	3	4
Overall ease of getting to the places you usually have to visit	1	2	3	4
Quality of overall natural environment in Bowling Green	1	2	3	4
Overall “built environment” of Bowling Green (including overall design, buildings, parks and transportation systems)	1	2	3	4
Health and wellness opportunities in Bowling Green	1	2	3	4
Overall opportunities for education and enrichment.....	1	2	3	4
Overall economic health of Bowling Green.....	1	2	3	4
Sense of community.....	1	2	3	4

14. Please rate the following aspects of Bowling Green’s parks and recreation facilities:

	<i>Excellent</i>	<i>Good</i>	<i>Fair</i>	<i>Poor</i>	<i>Don’t know</i>
Appearance of Bowling Green’s parks and recreation facilities.....	1	2	3	4	5
Range of activities available at Bowling Green’s parks and recreation facilities.....	1	2	3	4	5

15. Please rate the condition of residential and secondary roads within the city limits of Bowling Green (exclude state roads and federal highways that have route numbers, for example, U.S. 231 Scottsville Road, U.S. 31W Nashville Road, etc., which are not maintained by the City of Bowling Green).

- Excellent condition
- Good condition
- Fair condition
- Poor condition
- Don’t know/unsure

16. Please indicate how much of a source, if at all, you consider each of the following to be for obtaining information from the City of Bowling Green:

	<i>Major source</i>	<i>Minor source</i>	<i>Not a source</i>
City website (www.bgky.org)	1	2	3
Bowling Green Blog.....	1	2	3
City’s Facebook page	1	2	3
City’s Twitter feed.....	1	2	3
City Enews	1	2	3
Local cable channel 4.....	1	2	3

The City of Bowling Green 2018 Citizen Survey

Our last questions are about you and your household. Again, all of your responses to this survey are completely anonymous and will be reported in group form only.

D1. How often, if at all, do you do each of the following, considering all of the times you could?

	<i>Never</i>	<i>Rarely</i>	<i>Sometimes</i>	<i>Usually</i>	<i>Always</i>
Recycle at home	1	2	3	4	5
Purchase goods or services from a business located in Bowling Green	1	2	3	4	5
Eat at least 5 portions of fruits and vegetables a day	1	2	3	4	5
Participate in moderate or vigorous physical activity	1	2	3	4	5
Read or watch local news (via television, paper, computer, etc.)	1	2	3	4	5
Vote in local elections.....	1	2	3	4	5

D2. Would you say that in general your health is:

- Excellent
 Very good
 Good
 Fair
 Poor

D3. What impact, if any, do you think the economy will have on your family income in the next 6 months? Do you think the impact will be:

- Very positive
 Somewhat positive
 Neutral
 Somewhat negative
 Very negative

D4. What is your employment status?

- Working full time for pay
 Working part time for pay
 Unemployed, looking for paid work
 Unemployed, not looking for paid work
 Fully retired

D5. Do you work inside the boundaries of Bowling Green?

- Yes, outside the home
 Yes, from home
 No

D6. How many years have you lived in Bowling Green?

- Less than 2 years 11-20 years
 2-5 years More than 20 years
 6-10 years

D7. Which best describes the building you live in?

- One family house detached from any other houses
 Building with two or more homes (duplex, townhome, apartment or condominium)
 Mobile home
 Other

D8. Is this house, apartment or mobile home...

- Rented
 Owned

D9. About how much is your monthly housing cost for the place you live (including rent, mortgage payment, property tax, property insurance and homeowners' association (HOA) fees)?

- Less than \$300 per month
 \$300 to \$599 per month
 \$600 to \$999 per month
 \$1,000 to \$1,499 per month
 \$1,500 to \$2,499 per month
 \$2,500 or more per month

D10. Do any children 17 or under live in your household?

- No Yes

D11. Are you or any other members of your household aged 65 or older?

- No Yes

D12. How much do you anticipate your household's total income before taxes will be for the current year? (Please include in your total income money from all sources for all persons living in your household.)

- Less than \$25,000
 \$25,000 to \$49,999
 \$50,000 to \$99,999
 \$100,000 to \$149,999
 \$150,000 or more

Please respond to both questions D13 and D14:

D13. Are you Spanish, Hispanic or Latino?

- No, not Spanish, Hispanic or Latino
 Yes, I consider myself to be Spanish, Hispanic or Latino

D14. What is your race? (Mark one or more races to indicate what race you consider yourself to be.)

- American Indian or Alaskan Native
 Asian, Asian Indian or Pacific Islander
 Black or African American
 White
 Other

D15. In which category is your age?

- 18-24 years 55-64 years
 25-34 years 65-74 years
 35-44 years 75 years or older
 45-54 years

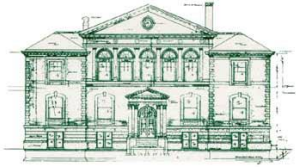
D16. What is your sex?

- Female Male

D17. Do you consider a cell phone or land line your primary telephone number?

- Cell Land line Both

Thank you for completing this survey. Please return the completed survey in the postage-paid envelope to: National Research Center, Inc., PO Box 549, Belle Mead, NJ 08502



CITY OF BOWLING GREEN
1001 COLLEGE STREET
BOWLING GREEN • KY •
42102-0430

Presorted
First Class Mail
US Postage
PAID
Boulder, CO
Permit NO.94