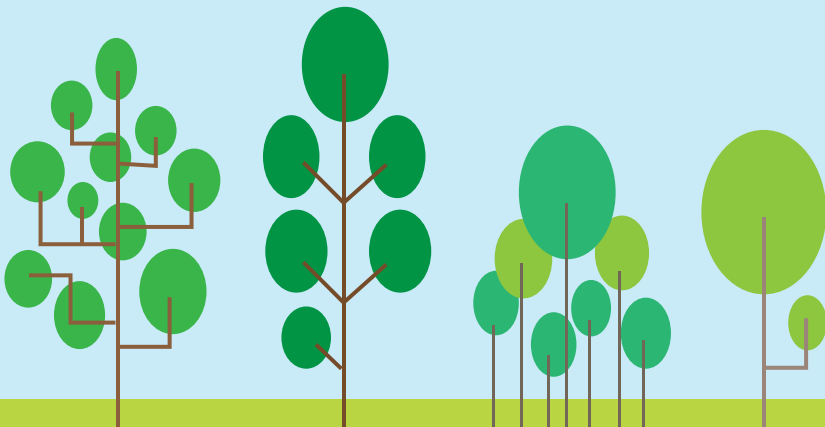


Parks & Recreation Activity Guide

Scavenger Hunt @ Lovers Lane:

1. Find a tree in the park dedicated to someone or their family
2. Find the Loops at Lovers Lane starting point/shelter
3. Find Hole 13 on the Disc Golf course
4. Find the map of the park — How many soccer fields are at Lovers Lane?
5. Score a goal and take a video of your best victory dance!
6. Take a picture with the Lovers Lane Park Sign
7. Try and snap a photo of a plane landing or taking off at the Bowling Green-Warren County Regional Airport
8. Take a lap around the loop of your choice
9. Find something blue in the park!
10. Find a good place for a family picnic in the park!
11. Lovers Lane has many different trees planted throughout the entire park, including maple trees! Do you think you can find a maple leaf somewhere in the park? Take a picture with the leaf you find!



Share with us all the wonderful things you find during this scavenger hunt by using **#BGParksScavengerHunt** on social media!



citybgky



CityofBGKY



cityofbgky