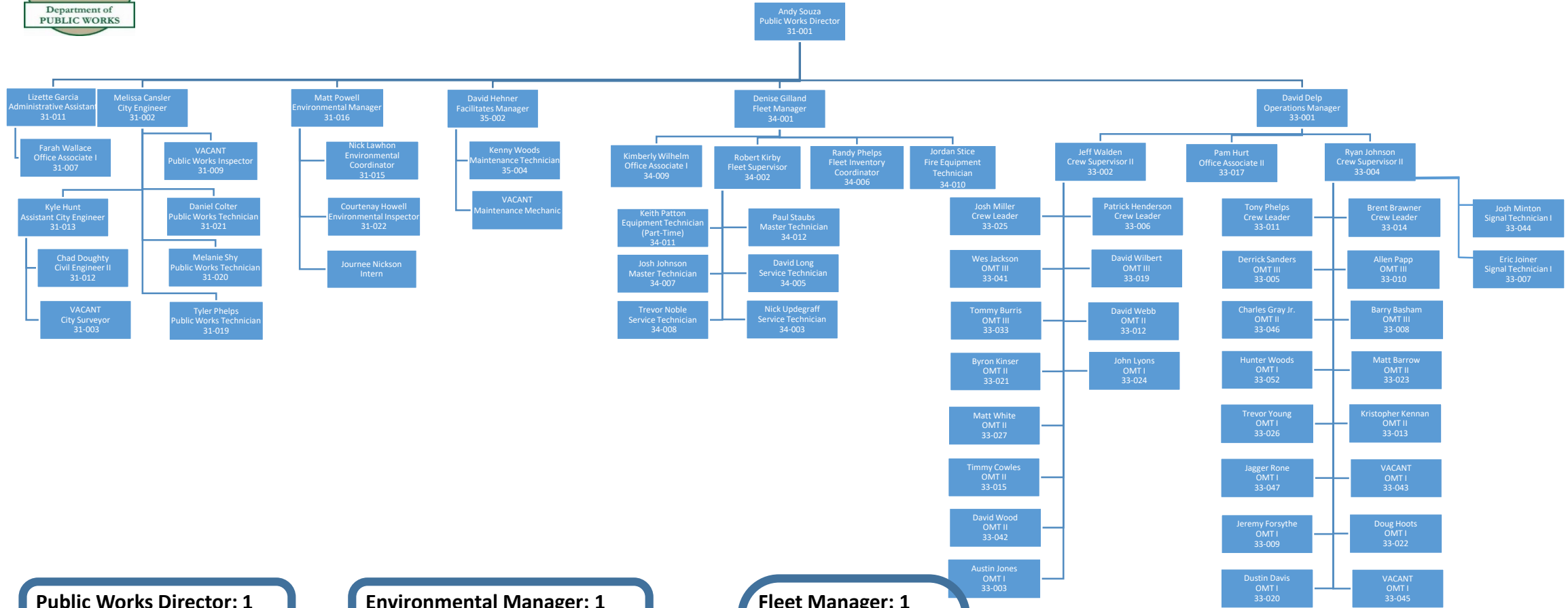




2023 Public Works Organizational Chart



Public Works Director: 1
Administrative Assistant: 1
Office Associate: 1

City Engineer: 1
Assistant City Engineer: 1
Civil Engineer: 1
City Surveyor: 1
Public Works Inspector: 1
Public Works Technician: 3

Environmental Manager: 1
Environmental Coordinator: 1
Environmental Inspector: 1

Facilities Manager: 1
Maintenance Technician: 1

Fleet Manager: 1
Office Associate I: 1
Fleet Supervisor: 1
Fleet Inventory Coordinator: 1
Fire Equip. Tech: 1
Master Technician: 1
Service Technician: 4
Equipment Tech: 1

Operations Manager: 1
Office Associate II: 1
Crew Supervisors: 2
Crew Leaders: 4
Signal Tech I: 2
OMT III: 6
OMT II: 8
OMT I: 10