



**Bowling Green, Kentucky
Stormwater Best Management Practices (BMPs)
Good Housekeeping Practices (GHPs)**

GHP-01

Activity: Dewatering Operations (DW)

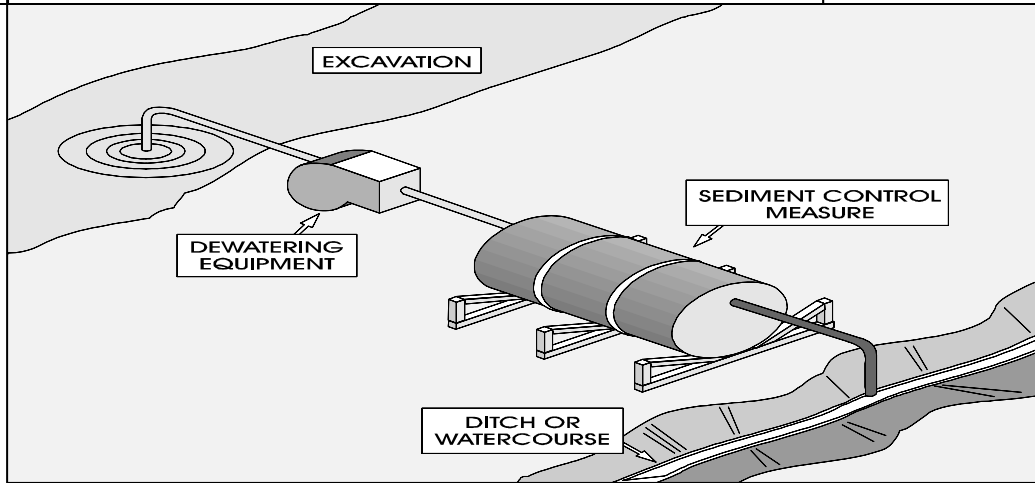
**PLANNING
CONSIDERATIONS:**

Design Life:
1-2 years

**Acreage
Needed:**
Minimal

**Estimated
Unit Cost:**
Medium

**Monthly
Maintenance:**
Moderate



Target Pollutants

Significant ♦ Partial ♦ Low or Unknown ♦

Sediment ♦ Heavy Metals ♦ Nutrients ♦ Oxygen Demanding Substances ♦ Toxic Materials ♦
Oil & Grease ♦ Bacteria & Viruses ♦ Floatable Materials ♦ Construction Waste ♦

Description

Testing of groundwater for pollution accumulation by using sediment controls is the basis of this BMP. This dewatering operation will reduce or prevent discharge of pollutants and aid in a partial reduction in toxic materials.

Approach

Sediment and toxic and petroleum products are two general classes of pollutants that may result from dewatering operations. Toxics and petroleum are rarely found in dewatering discharges unless the site or the surrounding vicinity has been used for light or heavy industrial activities. Sediment, on the other hand, usually has a high content in dewatering discharges due to the commonality of the operation. **This BMP only addresses capture of sediment.** If it is determined that dewatering will result in transfer or accumulation of toxics or petroleum products then the Kentucky Division of Water (KDOW) should be consulted before any dewater activities are performed.

Methods for Mitigating sediment discharge

- Use of sock filters or sediment filter bags on discharge pipes.
- Discharge muddy water into silt fence enclosures installed in vegetated areas away from water ways.
- Discharge muddy water to a de-silting basin.

Afterwards sediment can be removed once water has dispersed and stabilized. Seeding the area is also suggested.

**Maintenance
and Inspection
Checklist**

- Inspect filtering device frequently and repair or replace once the sediment build-up prevents the structure from functioning as designed.
- Sediment removal must be disposed of at a disposal site or spread and stabilized onsite.
- Inspect excavated areas daily for signs of contaminated water (signs such as discolored water, oily sheen or odor).